

Monthly Report on Short-term Transactions of Electricity in India

January 2024



Economics Division
Central Electricity Regulatory Commission
36, Janpath, Chanderlok Building



Contents

S.No.	Contents	Page No
	Contents	i
	List of Tables	ii
	List of Figures	iii
	Abbreviations	iv
1	Introduction	1
2	Volume of Short-term Transactions of Electricity and DSM	1
3	Price of Short-term Transactions of Electricity and DSM Charges	3
3.1	<i>Price of electricity transacted through Traders</i>	3
3.2	<i>Price of electricity transacted through Power Exchanges</i>	4
3.3	<i>DSM Charges</i>	4
4	Trading Margin	4
5	Volume of Short-term Transactions of Electricity (Regional Entity-wise)	5
6	Congestion on Inter-State Transmission Corridor for Day-Ahead Market and Real-Time Market on Power Exchanges	6
7	Volume and Price of Renewable Energy Certificates (RECs)	7
8	Inferences	8

S.No.	List of Tables	Page No.
Table-1	Volume of Short-term Transactions of Electricity and DSM (All India)	10
Table-2	Percentage Share of Electricity Transacted by Trading Licensees	12
Table-3	Price of Electricity Transacted through Traders	13
Table-4	Price of Electricity Transacted through Traders (Time-wise)	13
Table-5	Price of Electricity Transacted in Day Ahead Market	13
Table-6	Price of Electricity Transacted in Green Day Ahead Market	13
Table-7	Price of Electricity Transacted in High Price Day Ahead Market	13
Table-8	Price of Electricity Transacted in Real Time Market	13
Table-9	Volume and Price of Electricity in Term Ahead Market of IEX	13
Table-10	Volume and Price of Electricity in Term Ahead Market of PXIL	13
Table-11	Volume and Price of Electricity in Term Ahead Market of HPX	14
Table-12	Volume and Price of Electricity in Green Term Ahead Market of IEX	14
Table-13	Volume and Price of Electricity in Green Term Ahead Market of PXIL	14
Table-14	Volume and Price of Electricity in Green Term Ahead Market of HPX	14
Table-15	Volume and Price of Electricity in High Price Term Ahead Market of IEX	14
Table-16	Volume and Price of Electricity in High Price Term Ahead Market of PXIL	14
Table-17	Volume and Price of Electricity in High Price Term Ahead Market of HPX	14
Table-18	Volume of Electricity Sold in Day Ahead Market through Power Exchanges	16
Table-19	Volume of Electricity Purchased in Day Ahead Market through Power Exchanges	18
Table-20	Volume of Electricity Sold in Green Day Ahead Market through Power Exchanges	19
Table-21	Volume of Electricity Purchased in Green Day Ahead Market through Power Exchanges	20
Table-22	Volume of Electricity Sold in Real Time Market through Power Exchanges	21
Table-23	Volume of Electricity Purchased in Real Time Market through Power Exchanges	23
Table-24	Total Volume of Net Transactions through Power Exchanges (Regional Entity-wise)	24
Table-25	Details of Congestion in Power Exchanges	26
Table-26	Volume of Transactions through Power Exchanges (Day-wise)	27
Table-27(a)	Price of Day Ahead Transactions of Electricity (Day-Wise)	28
Table-27(b)	Price of Green Day Ahead Transactions of Electricity (Day-Wise)	29
Table-27(c)	Price of Real Time Transactions of Electricity (Day-Wise)	30
Table-27(d)	Price of High Price Day Ahead Transactions of Electricity (Day-Wise)	31
Table-28	Volume of Transactions through Power Exchanges (Regional Entity-wise)	32
Table-29	Volume and Charges under DSM (Day wise)	34
Table-30	Volume of Electricity Under drawal/ Over Injection (Exported) under DSM	35
Table-31	Volume of Electricity Over drawal/ Under Injection (Imported) under DSM	39
Table-32	Volume and Price of Renewable Energy Certificates (RECs) Transacted through Power Exchanges and through Traders (Bilateral)	43
Table-33(a)	Volume and Price of Cross Border Trade through Day Ahead Market at IEX	43
Table-33(b)	Volume and Price of Cross Border Trade through Real Time Market at IEX	43

S. No.	List of Figures	Page No.
Figure-1	Volume of various kinds of Electricity Transactions in Total Electricity Generation	10
Figure-2	Volume of Short-term Transactions of Electricity and DSM Volume	10
Figure-3	Volume transacted in different markets segments on Power Exchanges	11
Figure-4	Volume of transactions on Power Exchange and DSM Volume (Day-wise)	11
Figure-5	Percentage Share of Electricity Transacted by Trading Licensees	12
Figure-6	Weighted Average Price of Short-term Transactions of Electricity	15
Figure-7	Weighted Average Price of Short-term Transactions of Electricity (Day-wise)	15

Abbreviations

Abbreviation	Expanded Version
ABSP_ANTP	Acme Bhiwadi Solar Power Private Limited, Anantpur
ACBIL	ACB (India) Limited
ACP	Area Clearing Price
ACV	Area Clearing Volume
ACME_SLR	ACME Solar Power Project
ACME_RUMS	Acme Rewa Ultra Mega Solar Project
ADANI_4RE	Adani Renewable Energy Holding Four Limited
ADANI GREEN	Adani Green Energy Limited
ADANIHB_SLR	Adani Hybrid Energy Jaisalmer One Limited (Solar)
ADANI_SLR 4	Adani Solar Energy Four Private Limited
ADANIHB_WIND	Adani Hybrid Energy Jaisalmer One Limited (Wind)
ADY1_PVGD	Adyah Solar Energy Pvt Ltd., Block 1 Pavagada Solar Park
ADY2_PVGD	Adyah Solar Energy Pvt Ltd., Block 2 Pavagada Solar Park
ADY3_PVGD	Adyah Solar Energy Pvt Ltd., Block 3 Pavagada Solar Park
ADY6_PVGD	Adyah Solar Energy Pvt Ltd., Block 6 Pavagada Solar Park
ADY10_PVGD	Adyah Solar Energy Pvt Ltd., Block 10 Pavagada Solar Park
ADY13_PVGD	Adyah Solar Energy Pvt Ltd., Block 13 Pavagada Solar Park
AGEMPL BHUJ	Adani Green Energy (MP) Ltd.,Bhuj
AHEJOL_S_FTG2	Adani Hybrid Energy Jaisalmer One Limited (SOLAR)
AHEJOL_W_FTG2	Adani Hybrid Energy Jaisalmer One Limited (WIND)
AHEJ2L_SOLAR	Adani Hybrid Energy Jaisalmer Two Limited (Solar)
AHEJ3L_SOLAR	Adani Hybrid Energy Jaisalmer Three Limited (Solar)
AHEJ4L_SOLAR	Adani Hybrid Energy Jaisalmer Four Limited-Hybrid Solar
AHEJ4L_WIND	Adani Hybrid Energy Jaisalmer Four Limited-Hybrid Wind
AHSP_ANTP	Acme Hisar Solar Power Private Limited,Anantpur
AKS_PVGD	ACME Kurukshetra Solar Energy Pvt. Ltd
AKSP_ANTP	Acme Karnal Solar Power Private Limited,Anantpur
ALFANAR_BHUJ	Alfanar Group Wind Project, Bhuj, Gujarat
ALTRA XERGI	Altra Xergi Power Private Limited
AMP_GREEN6	Amp Energy Green Six Private Limited
AMPLUS_AGES	Amplus Ages Private Limited
AMPS Hazira	Arcelor Mittal Nippon Steel, Hazira
APTEL	Appellate Tribunal for Electricity
ARERJL_SLR	Adani Renewable Energy Park Rajasthan Ltd.
ARINSUM_RUMS	Solenergi RewaUltraMega Solar Project
ARS_PVGD	ACME REWARI Solar Power Pvt Ltd.
ARTPP	Adani Power Limited - Raipur TPP
ASEJTL_SLR	Adani Solar Energy Jodhpur Two Ltd.
AVAADA1_PVGD	Avaada Solar Energy Private Ltd., Pavagada Project 1
AVAADA2_PVGD	Avaada Solar Energy Private Ltd., Pavagada Project 2
AVADARJHN_SLR	Avaada Rjhn Private Limited_Solar
AYANA_NPKUNTA	Ayana Power, NP Kunta
AZURE_ANTP	Azure Power,Anantpur
AZURE_PVGD	Azure Power,Pavagada
AZURE_SLR	Azure Power Solar Power Project
AZURE34_SLR	Azure Power 34 Pvt. Ltd. Solar Power Project
AZURE43_SLR	Azure Power Forty Three Private Limited
BALCO	Bharat Aluminum Company Limited
BARC	Bhabha Atomic Research Centre
BASOCHHU HEP	Basochhu Hydropower Plant Bhutan
BBMB	Bhakra Beas Management Board
BETAM_TCN	Betam Wind Energy Private Limited, Tuticorin

BHADRAVATHI HVDC	Bhadravathi High Voltage Direct Current Link
BRBCL	Bhartiya Rail Bijlee Company Limited
CEA	Central Electricity Authority
CERC	Central Electricity Regulatory Commission
CGPL	Coastal Gujarat Power Limited
CHUKHA HEP	Chhukha Hydroelectric Project, Bhutan
CHUZACHEN HEP	Chuzachen Hydro Electric Power Project
CLEAN_SLR	Clean Solar Power Pvt. Ltd
CLEANSPLR_SLR	Clean Solar Jodhpur Pvt Ltd
COASTGEN	Coastal Energen Private Limited
DAGACHU	Dagachhu Hydro Power Corporation
DAM	Day Ahead Market
DEVKOOT_SLR	Devkoot Solar Power Plant, NTPC Green Energy Ltd.
DCPP	Donga Mahua Captive Power Plant
DD&DNH	Daman and Diu & Dadar Nagar Haveli
DGEN MEGA POWER	DGEN Mega Power Project
DGPCL Bhutan	Druk Green Power Corporation Ltd., Bhutan
DHARIWAL POWER	Dhariwal Power Station
DIKCHU HEP	Dikchu Hydro-electric Project, Sikkim
DOYANG HEP	DoyangHydro Electric Project
DSM	Deviation Settlement Mechanism
DVC	Damodar Valley Corporation
EDEN_SLR	Eden RE Cite Private limited
EMCO	EMCO Energy Limited
ESPL_RADHANESDA	Electro Solaire Private Limited, Radhanesda
ESSAR POWER	Essar Power Limited
FORTUM1_PVGD	Fortum Finnsurya Energy Private Ltd, Pavagada Project 1
FORTUM2_PVGD	Fortum Finnsurya Energy Private Ltd, Pavagada Project 2
FRV_ANTP	Fotowatio Renewable Ventures, Anantapur
FRV_NPK	Fotowatio Renewable Ventures, NP Kunta
GIPCL_RADHANESDA	Gujarat Industries Power Company Ltd, Radhanesda
GIWEL_BHUJ	Green infra wind energy Limited, Bhuj
GIWEL_TCN	Green Infra Wind Energy Limited, Tuticorin
GMR CHHATTISGARH	GMR Chhattisgarh Energy Limited
GMR KAMALANGA	GMR Kamalanga Energy Ltd.
G-DAM	Green Day Ahead Market
GRIAN	Grian Energy Private Limited
GSECL P-II	GSECL Raghnesda Solar Park (Phase-II)
G-TAM	Green Term Ahead Market
HPX	Hindustan Power Exchange Limited
HP-DAM	High Price Day Ahead Market
HP-TAM	High Price Term Ahead Market
HVDC ALPD	Alipurduar High Voltage Direct Current Link
HVDC CHAMPA	Champa-Kurukshetra High Voltage Direct Current Link
HVDC PUS	Pasauli High Voltage Direct Current Link
HVDC RAIGARH	Raigarh-Pugalur High Voltage Direct Current Link
IEX	Indian Energy Exchange Limited
IGSTPS	Indira Gandhi Super Thermal Power Station Jhajjar
IL&FS	Infrastructure Leasing & Financial Services Limited
INOX_BHUJ	INOX Wind Limited, Bhuj, Gujarat
J&K	Jammu & Kashmir
JAYPEE NIGRIE	Jaypee Nigrie Super Thermal Power Project
JHABUA POWER MP	Jhabua Thermal Power Project
JINDAL POWER	Jindal Power Limited

JINDAL STAGE-II	Jindal Power Ltd Stage II
JITPL	Jindal India Thermal Power Ltd.
JORETHANG	Jorethang Loop Hydroelectric Power Project
JSW_RENEW_2	JSW Renew Energy Two Limited
KAPP 3&4	Kakrapar Atomic Power Station Unit 3 & 4
KARCHAM WANGTOO	Karcham Wangtoo H.E. Project
KBUNL	Kanti Bijlee Utpadan Nigam Limited
KHURJA STPP	Khurja Super Thermal Power Plant
KORBA WEST POWER	Korba West Power Company Limited
KOTESHWAR	Koteshwar Hydro Power project
KREDL_PVGD	Karnataka Renewable Energy Development Ltd,Pavagada
KSK MAHANADI	KSK Mahanadi Power Ltd
KSMPL_SLR	Kilaj Solar (Maharashtra) Private Limited
KURICHU HEP	Kurichhu Hydro-electric Power Station, Bhutan
LANKO_AMK	LancoAmarkantak Power Private Limited
LANKO BUDHIL	LancoBudhil Hydro Power Private Limited
LANKOKONDAPALLY	Lanco Kondapally Power Private Limited
LOKTAK	Loktak Power Project
MAHINDRA_RUMS	Mahindra Rewa Ultra Mega Solar Project
MAHOBA_SLR	Mahoba Solar Power Project
MALANA	Malana Hydroelectric Plant
MANGDECHU HEP	Mangdechhu Hydroelectric Project, Mangdechhu River, Bhutan
Maruti Coal	Maruti Clean Coal and Power Limited
MB POWER	MB Power Ltd
MEENAKSHI	Meenakshi Energy Private Limited
MRPL	Mahindra Renewables Private Limited
MSEPL	Masaya Solar Energy Private Limited
MSRPL	Mega Solis Renewables Pvt. Ltd.
MTPS	TATA Power Mundra Thermal Power Station
MTPS II	Muzaffarpur Thermal Power Station – Stage II
MYTRAH_TCN	Mytrah Energy (India) Private Limited,Tuticorin
MU	Million Units
NAPP	Narora Atomic Power Plant
NCR ALLAHABAD	North Central Railway, Allahabad
NEEPCO	North Eastern Electric Power Corporation Limited
NEP	Nepal
NFL	National Fertilisers Limited
NHPC STATIONS	National Hydro Electric Power Corporation Ltd. Stations
NJPC	Nathpa Jhakri Hydroelectric Power Station
NLC	Neyveli Lignite Corporation Limited
NLDC	National Load Dispatch Centre
NOKHRA_STPP	Nokhra Solar Power Plant, NTPC Green Energy Ltd.
NPGC	Nabinagar Power Generating Company (Pvt.) Limited
NREL_DAYAPAR (W)	NREL-Dayapar Wind
NSPCL	NTPC - SAIL Power Company Private Limited
NTECLVallur	NTPC Tamil Nadu Energy Company Limited Vallur
NTPC_ANTP	NTPC Anantapur
NTPC STATIONS	National Thermal Power Corporation Ltd. Stations
NTPL	NLC Tamil Nadu Power Limited
NVVN	NTPC Vidyut Vyapar Nigam Limited
OCF	Order Carry Forward
ONEVOLT	Onevolt Energy Private Limited
ONGC Platana	ONGC Tripura Power Company
OPGC	Odisha Power Generation Corporation

ORANGE_TCN	Orange Renewable Power Pvt. Ltd,Tuticorin
OSTRO	Ostro Energy Private Limited
OTC	Over The Counter
PARAM_PVGD	Parampujya Solar Energy Private Ltd
PARE HEP	Pare hydroelectric project, Arunachal Pradesh
PXIL	Power Exchange India Limited
RAMPUR HEP	Rampur Hydro Electric Power Project
RANGIT HEP	Rangit Hydroelectric power project
RANGANADI HEP	Ranganadi Hydro Electric Power Project, Arunachal Pradesh
RAP-B	Rajasthan Atomic Power Plant-B
RAP-C	Rajasthan Atomic Power Plant-C
RAPP 7&8	Rajasthan Atomic Project 7&8
REC	Renewable Energy Certificate
REGL	Raigarh Energy Generation Limited
RENEW_BHACHAU	ReNew Power Limited, Bhachau
RENEW_BHUJ	ReNew Power Limited, Bhuj
RENEW_PVGD	ReNew Wind Energy (TN2) Private Limited
RENEW_SLR_BKN	Renew Solar Bikaner
RENEW_SPRATAP	Renew Surya Pratap Private Limited
RENEW_SR_SLR	Renew Surya Ravi Private Limited (Solar)
RENEW_SVIHAAN	Renew Surya Vihaan Private Limited
RENEW_ROSHNI	Renew Surya Roshni Private Limited Koppal PS
RENEWJH_SLR	Renew Solar Energy (Jharkhand Three) Private Limited
RENEWURJA_SLR	ReNew Solar Urja Private Limited
RGPPL_IR	Ratnagiri Gas and Power Private Ltd., supply to Indian Railways
RGPPL_OTHER	Ratnagiri Gas and Power Private Limited
RISING_SLR	Rising Sun Energy Pvt. Ltd.
RLDC	Regional Load Dispatch Centre
RONGNICHU HEP	Rongnichu Hydro Electric Power Project
RPREL	Raipur Energen Limited
RSTPS_FSPP	NTPC Ramagundam STPS- Floating Solar PV Project
RTC	Round The Clock
RTM	Real Time Market
SasanUMPP	Sasan Ultra Mega Power Project
SB_SLR	Soft Bank Solar
SB6_POKARAN	SB Energy Six Private Limited, Pokaran
SBG_CLEANTECH_SLR	SBG Cleantech Ltd
SBG_NPK	SB Energy Solar Private Limited,NP Kunta
SBG_PVGD	SB Energy Solar Private Limited,Pavagada
SBSR_SLR	SBSR Power Cleantech Eleven Private Limited
SEMBCORP	Sembcorp Gayatri Power Ltd
SIMHAPURI	Simhapuri Energy Private Limited
SKS Power	SKS Power Generation Chhattisgarh Limited
SESPL	Srijan Energy Systems Pvt. Ltd.
SINGOLI BHATWARI HEP	Singoli-Bhatwari Hydroelectric Project, Uttarakhand
SKRPL	Sitac Kabini Renewables Pvt. Ltd.
SPRNG_NPKUNTA	Sprng Energy, NP Kunta
SPRING_PUGALUR	Spring Solar Power Private Limited, Pugalur
SUL	Sikkim Urja Limited
TALA HEP	Tala Hydroelectric Project, Bhutan
TASHIDENG HEP	Tashiding Hydro Electric Project, Sikkim
TATA_ANTP	TATA Power Anantapur
TATA_PVGD	Tata Power Renewable Energy Ltd
TATA_SLR	Tata Solar

TEESTA STG3	Teesta Stage 3 Hydro Power Project
TEHRI	Tehri Hydro Electric Power Project
TAM	Term Ahead Market
THAR1_SLR	Thar Surya Ravi One Pvt Ltd
THERMAL POWERTECH	Thermal Powertech Corporation India Limited
TPREL_RADHANESDA	Tata Power Renewable Energy Limited, Radhanesda
TPSL	TP Saurya Limited
VINDHYACHAL HVDC	Vindhyachal High Voltage Direct Current Link
WA	Weighted Average
YARROW_PVGD	Yarrow Infra Structure Private Ltd

1. Introduction

1.1. A well-functioning electricity market requires an effective market monitoring process. The monthly report on short-term transactions of electricity, published by CERC since 2008 as part of its market monitoring process, provides a snapshot of key aspects of short-term transactions of electricity in India. Here, “short-term transactions of electricity” refers to the contracts of less than one year period for electricity transacted (inter-State) - through Trading Licensees, directly by the Distribution Licensees and on Power Exchanges (Indian Energy Exchange Ltd (IEX), Power Exchange India Ltd (PXIL) and Hindustan Power Exchange Ltd (HPX)). “DSM Volume” includes the volume recorded under Deviation Settlement Mechanism. The main objectives of the report are: (i) to analyse the volume and price of the short-term transactions of electricity; (ii) to assess the competition among the market players; (iii) to analyse the effect of congestion on the volume of electricity transacted through power exchanges; (iv) to provide information on volume and price of Renewable Energy Certificates (RECs) transacted through power exchanges; and (v) to disseminate all other relevant market information. The analysis of short-term transactions of electricity and DSM volume during the month of **January 2024** is presented in the following sections.

2. Volume of Short-term Transactions of Electricity and DSM

2.1. During January 2024, total electricity generation, excluding generation from renewable and captive power plants in India, was 127768.64 MU (Table-1). Of the total electricity generation, 12.58% was transacted through short-term and DSM, comprising of 6.41% through power exchanges {Day Ahead Market (DAM) (including G-DAM) and Real Time Market (RTM)}, followed by 4.41% through bilateral¹ (through Traders and Term-Ahead contracts on power exchanges, and directly between distribution companies), and 1.76% through DSM (Table-1 & Figure-1).

2.2. Of the total short-term transactions and DSM volume (16069.33 MU), 50.93% was transacted through power exchanges {DAM (including G-DAM & HP-DAM) and RTM}, followed by 35.08% through bilateral (i.e. through Traders, Term-Ahead contracts on power

¹ With change in the regime on implementation of GNA Regulations from 1st October 2023, the volume reported here is not strictly comparable to the volumes in previous months. Some discrepancies were identified by CERC in the data provided by NLDC which prompted further validation. The volume herein is computed after verification with the volumes reported by the Trading Licensees and the Power Exchanges, and are subject to further revision. The Commission has directed NLDC, vide letter dated 05.01.2024, to make necessary provisions to differentiate the type of transactions under GNA and T-GNA at the earliest. In the interim, some of the tables in the monthly reports have been temporarily discontinued.

exchanges and directly between companies), and 13.99% through DSM (Table-1 & Figure-2). The daily volume of power exchange transactions is shown in Table-26. Figure-4 shows the daily volume trend for power exchange transactions and DSM volume.

2.3. Of the total volume of electricity transacted through power exchanges, 55.29% of the volume was transacted in DAM (including G-DAM & HP-DAM), followed by 22.76% in RTM and 21.95% in Term Ahead Market (TAM) (including G-TAM & HP-TAM) (Figure-3).

2.4. The share of electricity traded by each trading licensee is given in Table-2 & Figure-5. The volume of electricity transacted by the trading licensees includes bilateral transactions and transactions undertaken through power exchanges. There were 57 trading licensees as of January 2024. Of which, 33 trading licensees were engaged in short-term trading. The top 5 trading licensees, namely PTC India Ltd., NTPC Vidyut Vyapar Nigam Ltd., Adani Enterprises Ltd., Arunachal Pradesh Power Corporation (P) Ltd. and Tata Power Trading Company (P) Ltd., had a share of 84.78% in the total volume of electricity traded by all the licensees.

2.5. Herfindahl-Hirschman Index (HHI), a commonly accepted index to calculate market concentration, has been used to measure competition among trading licensees. An increase in the HHI generally indicates a decrease in competition and an increase in market concentration, and vice versa. The HHI below 0.15 indicates non-concentration, HHI between 0.15 and 0.25 indicates moderate concentration, and HHI above 0.25 indicates high concentration. The HHI has been computed based on the volume of electricity traded (inter-State & intra-State) by inter-State trading licensees, and it was 0.2061 for the month of January 2024, which indicates moderate concentration of market power (Table-2).

2.6. The volume of electricity transacted in the DAM of IEX, PXIL and HPX was 5561.85 MU, 17.19 MU and 9.11 MU, respectively. The volume of total buy bids and sell bids was 10649.69 MU and 9152.59 MU, respectively in IEX, 60.81 MU and 78.72 MU, respectively in PXIL, while the same was 19.13 MU and 60.61 MU, respectively in HPX.

2.7. Of the total volume of electricity transacted in the DAM of IEX, the volume purchased by the neighbouring countries of India was 545.88 MU, while no volume was sold by the neighbouring countries, under the Cross Border Trade of electricity through power

exchange (Table-33(a)). No Cross Border transaction of electricity was undertaken through PXIL and HPX.

2.8. The volume of electricity transacted in the G-DAM of IEX was 209.45 MU, while no electricity was transacted in the G-DAM of PXIL and HPX. The volume of total buy bids and sell bids was 1683.67 MU and 402.97 MU, respectively, in IEX. No bids were received in PXIL and HPX.

2.9. No volume was traded in the HP-DAM of IEX, PXIL or HPX. The volume of total buy bids and sell bids was 0.13 MU and 1867.66 MU, respectively in IEX. No bids were received in PXIL and HPX.

2.10. The volume of electricity transacted in the RTM of IEX, PXIL and HPX was 2379.90 MU, 0.57 MU and 5.97 MU, respectively. The volume of total buy bids and sell bids was 6834.03 MU and 4643.94 MU, respectively in IEX, 1.49 MU and 1.19 MU, respectively in PXIL, while the same was 8.38 MU and 11.69 MU, respectively in HPX. The variation in the volume of buy bids and sell bids placed through power exchanges shows variation in the demand and supply position.

2.11. Of the total volume of electricity transacted in the RTM of IEX, the volume sold by the neighbouring countries of India was 0.15 MU, while the volume purchased was 19.40 MU, under the Cross Border Trade of electricity through power exchange (Table-33(b)). No Cross Border transaction of electricity was undertaken through PXIL and HPX.

2.12. The volume of electricity transacted in the TAM of IEX, PXIL and HPX was 1217.28 MU, 487.57 MU and 541.20MU, respectively (Table-9, Table-10 & Table-11). The volume of electricity transacted in the Green Term Ahead Market (G-TAM) of IEX, PXIL and HPX was 26.64 MU, 2.06 MU and 26.30 MU, respectively (Table-12, Table-13 & Table-14).

2.13. No volume was traded in the High Price Term Ahead Market (HP-TAM) of IEX, PXIL and HPX (Table-15, Table-16 & Table-17).

3. Price of Short-term Transactions of Electricity and DSM charges

3.1. *Price of electricity transacted through Traders:* The minimum, maximum and weighted average sale prices for the electricity transacted through traders were ₹4.27/kWh, ₹8.63/kWh and ₹6.66/kWh, respectively (Table-3). The weighted average sale prices were

also computed for the electricity transacted during Round the Clock (RTC) and Off-peak periods separately, and the sale prices were ₹6.70/kWh and ₹6.59/kWh, respectively. No electricity was transacted through traders during Peak periods (Table-4).

3.2. **Price of electricity transacted through Power Exchanges:** The minimum, maximum and weighted average prices for the electricity transacted in the DAM of IEX were ₹1.87/kWh, ₹10.00/kWh and ₹6.03/kWh, respectively. These prices in the DAM of PXIL were ₹9.50/kWh, ₹10.00/kWh and ₹10.00/kWh respectively. The minimum, maximum and weighted average prices for the electricity transacted in the DAM of HPX were ₹10.00/kWh, ₹10.00/kWh and ₹10.00/kWh respectively (Table-5). The minimum, maximum and weighted average prices for the electricity transacted in the G-DAM of IEX were ₹3.20/kWh, ₹10.00/kWh and ₹5.87/kWh, respectively (Table-6). The minimum, maximum and weighted average prices for the electricity transacted in the RTM of IEX were ₹1.30/kWh, ₹10.00/kWh and ₹6.03/kWh, respectively. These prices in the RTM of PXIL were ₹10.00/kWh, ₹10.00/kWh and ₹10.00/kWh respectively. The minimum, maximum and weighted average prices for the electricity transacted in the RTM of HPX were ₹10.00/kWh, ₹10.00/kWh and ₹10.00/kWh respectively (Table-8). The weighted average price of electricity transacted in the TAM of IEX, PXIL and HPX was ₹6.22/kWh, ₹8.29/kWh and ₹7.27/kWh, respectively (Table-9, Table-10 and Table-11). The weighted average price of electricity transacted in the G-TAM of IEX, PXIL and HPX was ₹6.44/kWh, ₹7.06/kWh and ₹6.67/kWh, respectively (Table-12, Table-13 and Table-14). No electricity was transacted in G-DAM of PXIL & HPX, in HP-DAM and HP-TAM of all power exchanges.

3.3. **DSM Charges:** The minimum, maximum and average charge under DSM was ₹2.00/kWh, ₹10.00/kWh and ₹6.28/kWh, respectively (Table-29).

3.4. The comparison of weighted average prices of electricity transacted through trading licensees and power exchanges is shown in Figure-6. The daily prices of electricity transacted through various segments at power exchanges and their comparison are shown in Table-27(a), (b), (c) & (d) and Figure-7. The daily volume and charges under DSM are shown in Table-29.

4. Trading Margin

4.1. As per the CERC (Procedure, Terms and Conditions for grant of trading licence and other related matters) Regulations 2020, the trading licensees are allowed to charge a trading

margin of not less than 0 paise/kWh and upto 7 paise/kWh. The weighted average trading margin charged by the trading licensees for bilateral transactions during the month was ₹0.027/kWh.

5. Volume of Short-term Transactions of Electricity (Regional Entity²-Wise)

5.1. Of the total DAM transactions at power exchanges, the top 5 regional entities/states sold 35.11% of the volume, and these were Chhattisgarh, Jindal Power Ltd Stage II, Essar Power, Adani Power Limited - Raipur TPP and Jindal India Thermal Power Ltd. (Table-18). The top 5 regional entities/states purchased 50.54% of the volume, and these were Telangana, Punjab, Uttar Pradesh, Gujarat and Jammu & Kashmir (Table-19).

5.2. Of the total G-DAM transactions at power exchanges, the top 5 regional entities/states sold 53.42% of the volume, and these were Altra Xergi Power Private Limited, Adani Wind Energy, Ayana Power NP Kunta, Andhra Pradesh and Jammu & Kashmir (Table-20). The top 5 regional entities/states purchased 62.57% of the volume, and these were Arcelor Mittal Nippon Steel Hazira, Delhi, Maharashtra, Tamil Nadu and Punjab (Table-21).

5.3. No volume was traded in HP-DAM of all three power exchanges.

5.4. Of the total RTM transactions at power exchanges, the top 5 regional entities/states sold 40.33% of the volume, and these were Madhya Pradesh, Odisha, Bihar, Chhattisgarh and West Bengal (Table-22). The top 5 regional entities/states purchased 55.70% of the volume, and these were Punjab, Telangana, Rajasthan, Uttar Pradesh and Kerala (Table-23).

5.5. The total volume of net transactions through power exchanges (Regional entity-wise), is shown in Table-24 & 28. The top 5 electricity selling regional entities/states of power exchange transactions were Chhattisgarh, Jindal Power Ltd Stage II, Odisha, Adani Power Limited - Raipur TPP and Essar Power. The top 5 electricity purchasing regional entities/states of power exchange transactions were Telangana, Punjab, Jammu & Kashmir, Rajasthan and Druk Green Power Corporation Ltd. Bhutan.

5.6. Of the total under-drawal/ over-injection volume under DSM in January 2024, the top 5 regional entities/states accounted for 21.78% of the volume, and these were Madhya

² In case of a State, the entities which are “selling” also include generators connected to State Grid and the entities which are “buying” also include open access consumers.

Pradesh, Uttar Pradesh, Maharashtra, Punjab and Gujarat (Table-30). The top 5 regional entities/states under DSM accounted for 18.12% of the total over-drawal/ under-injection volume, and these were NTPC Stations (Northern Region), NTPC Stations (Western Region), Adani Hybrid Energy Jaisalmer One Limited (Solar), NTPC Stations (Eastern Region) and Maharashtra (Table-31).

6. Congestion³ on Inter-State Transmission Corridor for Day-Ahead Market and Real Time Market on Power Exchanges

6.1. Power exchanges use a price discovery mechanism in which the aggregate demand and supply are matched to arrive at an unconstrained market price and volume. This process assumes that there is no congestion in the inter-State transmission system between different regions. However, in reality, the system operator (NLDC), in coordination with RLDCs, limits the flow (due to congestion) in the inter-State transmission system. In such a situation, power exchanges adopt a mechanism called “Market Splitting”⁴.

6.2. The volume of electricity that could not be cleared due to congestion & other reasons and could not be transacted through power exchanges is the difference between unconstrained cleared volume and actual cleared volume. During the month of January 2024, congestion was experienced in RTM on IEX only.

6.3. The volume of electricity that could not be cleared due to congestion in RTM of IEX was 0.11% of the unconstrained cleared volume. In terms of time, congestion occurred was 0.24% in RTM of IEX during the month. (Table-25).

³ “Congestion” means a situation where the demand for transmission capacity exceeds the available transfer capability

⁴ “Market Splitting” is a mechanism adopted by Power Exchanges, where the market is split in the event of transmission congestion, into predetermined (by NLDC) bid areas or zones, which are cleared individually at their respective area prices such that the energy balance in every bid area is reached based upon the demand and supply in individual bid areas and using the available transmission corridor capacity between various bid areas simultaneously. As a result of this market splitting the price of electricity in the importing region, where demand for electricity is more than supply, becomes relatively higher than the price of electricity in the exporting region.

7. Volume and Price of Renewable Energy Certificates (RECs)

7.1. The concept of Renewable Energy Certificates (RECs) seeks to address the mismatch between the availability of renewable energy and the requirement of the obligated entities to meet their renewable purchase obligation by purchasing green attributes of renewable energy remotely located in the form of RECs. The REC mechanism is a market-based instrument to promote renewable sources of energy and the development of the electricity market.

7.2. One REC is equivalent to 1 MWh electricity injected into the grid from renewable energy sources. The REC is exchanged only in the power exchanges approved by CERC within the band of a floor price and forbearance (ceiling) price as notified by CERC from time to time. The first REC trading was held on power exchanges in May 2011.

7.3. The categorisation of RECs has been dispensed with on introduction of the concept of multiplier under the CERC (Terms and Conditions for Renewable Energy Certificates for Renewable Energy Generation) Regulations, 2022, brought into effect from 05.12.2022. Accordingly, the power exchanges deactivated the Solar and Non-Solar REC contract for trading w.e.f. December 2022. A new contract named “REC” has been made available for trading on the power exchanges. Further, RECs can also be exchanged through trading licensees as per the REC Regulations 2022.

7.4. The details of REC transactions for the month of January 2024 are shown in Table-32. The market clearing volume of RECs transacted on IEX, PXIL and HPX was 1520076, 1114486 and 14742, respectively. The weighted average market clearing price of these RECs was ₹360/MWh in IEX, ₹360/MWh in PXIL and ₹350/MWh in HPX.

7.5. The gap between the volume of buy and sell bids of RECs placed through power exchanges shows the variation in demand for the RECs. The ratio of buy bids to sell bids was 0.12, 0.16 and 0.05 in IEX, PXIL and HPX, respectively.

7.6. The volume of RECs transacted through Trading Licensees in January 2024 was 20500. The weighted average trade price for the RECs transacted through traders was ₹624/MWh.

8. Inferences:

- a) The percentage of short-term transactions of electricity and DSM volume to total electricity generation was 12.58%.
- b) Of the total short-term transactions and DSM volume (16069.33 MU), 50.93% was transacted through power exchanges {DAM (including G-DAM & HP-DAM) and RTM}, followed by 35.08% through bilateral (i.e. through Traders, Term-Ahead contracts on power exchanges and directly between companies), and 13.99% through DSM.
- c) Of the total volume of electricity transacted through power exchanges, 55.29% of the volume was transacted in DAM (including G-DAM & HP-DAM), followed by 22.76% in RTM and 21.95% in Term Ahead Market (TAM) (including G-TAM & HP-TAM).
- d) The top 5 trading licensees had a share of 84.78% in the total volume traded by all the trading licensees.
- e) The Herfindahl Hirschman Index computed for the volume of electricity traded by trading licensees was 0.2061, indicating moderate concentration of market power.
- f) The weighted average sale price of electricity transacted through trading licensees was ₹6.66/kWh.
- g) The weighted average price of electricity transacted in DAM of IEX, PXIL and HPX was ₹6.03/kWh, ₹10.00/kWh and ₹10.00/kWh. The weighted average price of electricity transacted in G-DAM of IEX was ₹5.87/kWh, while no electricity was transacted in G-DAM of PXIL and HPX. No volume was traded in HP-DAM. The weighted average price of electricity transacted in RTM of IEX, PXIL and HPX was ₹6.03/kWh, ₹10.00/kWh and ₹10.00/kWh respectively.
- h) The weighted average price of electricity transacted in TAM of IEX, PXIL and HPX was ₹6.22/kWh, ₹8.29/kWh and ₹7.27/kWh, respectively. The weighted average price of electricity transacted in G-TAM of IEX, PXIL and HPX was ₹6.44/kWh, ₹7.06/kWh and ₹6.67/kWh, respectively. No volume was traded in HP-TAM in any of the power exchanges.
- i) The average charge under DSM was ₹6.28/kWh.

- j) The weighted average trading margin charged by the trading licensees for bilateral transactions was ₹0.027/kWh.
- k) The top 5 electricity selling regional entities/states of power exchange transactions were Chhattisgarh, Jindal Power Ltd Stage II, Odisha, Adani Power Limited - Raipur TPP and Essar Power. The top 5 electricity purchasing regional entities/states of power exchange transactions were Telangana, Punjab, Jammu & Kashmir, Rajasthan and Druk Green Power Corporation Ltd. Bhutan.
- l) The top 5 under-drawing/ over-injecting regional entities/states under DSM were Madhya Pradesh, Uttar Pradesh, Maharashtra, Punjab and Gujarat. The top 5 over-drawing/ under-injecting regional entities/states under DSM were NTPC Stations (Northern Region), NTPC Stations (Western Region), Adani Hybrid Energy Jaisalmer One Limited (Solar), NTPC Stations (Eastern Region) and Maharashtra.
- m) During the month of January 2024, congestion was experienced in RTM of IEX only. The volume of electricity that could not be cleared due to congestion in RTM of IEX was 0.11% of the unconstrained cleared volume.
- n) The market clearing volume of RECs transacted on IEX, PXIL and HPX was 1520076, 1114486 and 14742, respectively. The weighted average market clearing price of these RECs was ₹360/MWh in IEX, ₹360/MWh in PXIL and ₹350/MWh in HPX. The volume of RECs transacted through Trading Licensees in January 2024 was 20500. The weighted average trade price for the RECs transacted through traders was ₹624/MWh.

Table-1: VOLUME OF SHORT-TERM TRANSACTIONS OF ELECTRICITY AND DSM (ALL INDIA), JANUARY 2024				
Sr. No	Transaction	Volume (MU)	% to short-term transactions and DSM Volume	% to Total Generation
A	Short-term transactions			
1	Bilateral*	5637.56	35.08	4.41
2	Through Power Exchanges	8184.05	50.93	6.41
	(i) IEX			
	(a) DAM	5561.85	34.61	4.35
	(b) RTM	2379.90	14.81	1.86
	(c) GDAM	209.45	1.30	0.16
	(d) HP-DAM	0.00	0.00	0.00
	(ii) PXIL			
	(a) DAM	17.19	0.11	0.01
	(b) RTM	0.57	0.004	0.0004
	(c) GDAM	0.00	0.00	0.00
	(d) HP-DAM	0.00	0.00	0.00
	(ii) HPX			
	(a) DAM	9.11	0.06	0.01
	(b) RTM	5.97	0.04	0.00
	(c) GDAM	0.00	0.00	0.00
	(d) HP-DAM	0.00	0.00	0.00
B	Through DSM	2247.72	13.99	1.76
Total Short-term transactions and DSM		16069.33	-	12.58
Total Generation		127768.64	-	-

Source: NLDC

Figure-1: Volume of various kinds of Electricity Transactions in Total Electricity Generation, January 2024

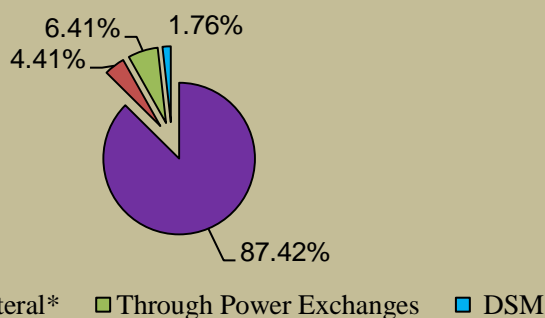
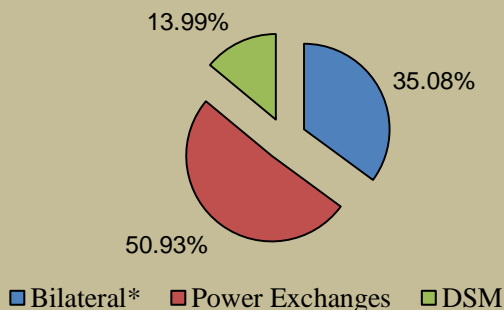


Figure-2: Volume of Short-term Transactions of Electricity and DSM Volume, January 2024



* With change in the regime on implementation of GNA Regulations from 1st October 2023, the volume reported here is not strictly comparable to the volumes in previous months. Some discrepancies were identified by CERC in the data provided by NLDC which prompted further validation. The volume herein is computed after verification with the volumes reported by the Trading Licensees and the Power Exchanges, and are subject to further revision. The Commission has directed NLDC, vide letter dated 05.01.2024, to make necessary provisions to differentiate the type of transactions under GNA and T-GNA at the earliest.

Figure-3: Volume transacted in different markets segments on Power Exchanges, January 2024

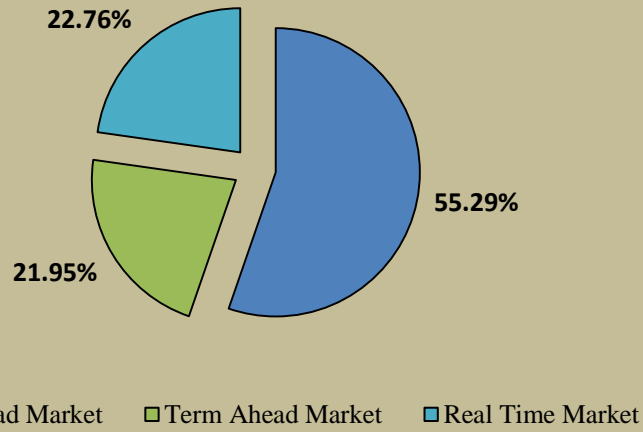


Figure-4: Volume of Transactions on Power Exchange and DSM Volume, January 2024 (Day-wise)

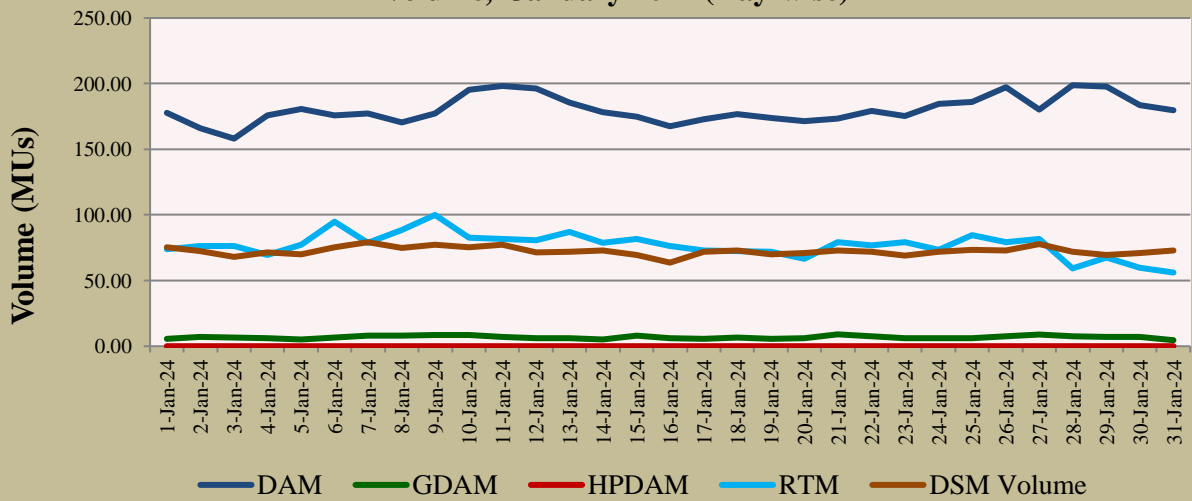


Table-2: PERCENTAGE SHARE OF ELECTRICITY TRANSACTED BY TRADING LICENSEES, JANUARY 2024

Sr. No	Name of the Trading Licensee	% Share in total Volume traded by Trading Licensees
1	PTC India Ltd.	37.39
2	NTPC Vidyut Vyapar Nigam Ltd.	16.36
3	Adani Enterprises Ltd.	14.17
4	Arunachal Pradesh Power Corporation (P) Ltd	9.23
5	Tata Power Trading Company (P) Ltd.	7.64
6	Manikaran Power Ltd.	6.21
7	GMR Energy Trading Ltd.	2.91
8	JSW Power Trading Company Ltd	1.26
9	Instinct Infra & Power Ltd.	0.97
10	RPG Power Trading Company Ltd.	0.75
11	Shubheksha Advisors Pvt. Ltd.	0.54
12	Gita Power & Infrastructure Private Limited	0.41
13	Kreate Energy (I) Pvt. Ltd.	0.38
14	Kundan International Pvt. Ltd.	0.27
15	Adarsh Stainless Pvt. Ltd.	0.25
16	Saranyu Power Trading Private Limited	0.20
17	Ambitious Power Trading Company Ltd.	0.15
18	Statkraft Markets Pvt. Ltd.	0.14
19	Greenko Energies Pvt Ltd	0.11
20	Energysedge Power Trading Pvt. Ltd.	0.10
21	NLC India Ltd.	0.10
22	Ideal Energy Solution Pvt. Ltd.	0.09
23	Instant Venture Pvt. Ltd.	0.08
24	SJVN Ltd.	0.06
25	Abja Power Private Limited	0.05
26	Shree Cement Ltd.	0.04
27	Powerfull Energy Trading Pvt. Ltd.	0.04
28	Refex Industries Ltd.	0.04
29	Saini Power Transactor	0.03
30	ReNew Energy Markets Private Limited	0.03
31	Customized Energy Solutions India (P) Ltd.	0.02
32	Phillip Commodities India (P) Ltd.	0.01
33	Altilium Energie Private Limited	0.001
TOTAL		100.00%
Top 5 trading licensees		84.78%
Herfindahl-Hirschman Index		0.2061

Note 1: Volume of electricity transacted by the trading licensees includes bilateral transactions (inter-state & intra-state) and the transactions undertaken through power exchanges.

Note 2: Volume of electricity transacted by Global Energy Ltd. is not included.

Source: Information submitted by trading licensees

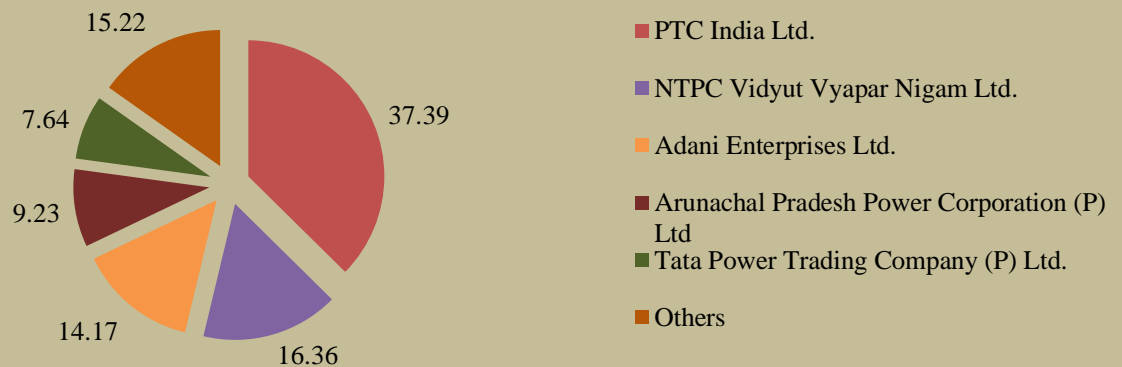
Figure 5: Percentage Share of Electricity Transacted by Trading Licensees, January 2024

Table-3: PRICE OF ELECTRICITY TRANSACTED THROUGH TRADERS, JANUARY 2024

Sr.No	Item	Sale Price of Traders (₹/kWh)
1	Minimum	4.27
2	Maximum	8.63
3	Weighted Average	6.66

Source: Information submitted by trading licensees

Table-4: PRICE OF ELECTRICITY TRANSACTED THROUGH TRADERS (TIME-WISE), JANUARY 2024

Sr.No	Period of Trade	Sale Price of Traders (₹/kWh)
1	RTC	6.70
2	PEAK	-
3	OFF PEAK	6.59

Source: Information submitted by trading licensees

Table-5: PRICE OF ELECTRICITY TRANSACTED IN DAY AHEAD MARKET, JANUARY 2024

Sr.No	ACP	Price in IEX (₹/kWh)	Price in PXIL (₹/kWh)	Price in HPX (₹/kWh)
1	Minimum	1.87	9.50	10.00
2	Maximum	10.00	10.00	10.00
3	Weighted Average	6.03	10.00	10.00

Source: IEX, PXIL and HPX

Table-6: PRICE OF ELECTRICITY TRANSACTED IN GREEN DAY AHEAD MARKET, JANUARY 2024

Sr.No	ACP	Price in IEX (₹/kWh)	Price in PXIL (₹/kWh)	Price in HPX (₹/kWh)
1	Minimum	3.20	-	-
2	Maximum	10.00	-	-
3	Weighted Average	5.87	-	-

Source: IEX, PXIL and HPX

Table-7: PRICE OF ELECTRICITY TRANSACTED IN HIGH PRICE DAY AHEAD MARKET, JANUARY 2024

Sr.No	ACP	Price in IEX (₹/kWh)	Price in PXIL (₹/kWh)	Price in HPX (₹/kWh)
1	Minimum	-	-	-
2	Maximum	-	-	-
3	Weighted Average	-	-	-

Source: IEX, PXIL and HPX

Table-8: PRICE OF ELECTRICITY TRANSACTED IN REAL TIME MARKET, JANUARY 2024

Sr.No	ACP	Price in IEX (₹/kWh)	Price in PXIL (₹/kWh)	Price in HPX (₹/kWh)
1	Minimum	1.30	10.00	10.00
2	Maximum	10.00	10.00	10.00
3	Weighted Average	6.03	10.00	10.00

Source: IEX, PXIL and HPX

Table-9: VOLUME AND PRICE OF ELECTRICITY IN TERM AHEAD MARKET OF IEX, JANUARY 2024

Sr.No	Term ahead contracts	Actual Scheduled Volume (MU)	Weighted Average Price (₹/kWh)
1	Intra-Day Contracts	1.61	8.50
2	Day Ahead Contingency Contracts	111.88	7.81
3	Daily Contracts	408.84	5.48
4	Monthly Contracts	245.70	5.47
5	Any Day Single Sided Contracts	449.25	6.91
	Total	1217.28	6.22

Source: IEX

Table-10: VOLUME AND PRICE OF ELECTRICITY IN TERM AHEAD MARKET OF PXIL, JANUARY 2024

Sr.No	Term ahead contracts	Actual Scheduled Volume (MU)	Weighted Average Price (₹/kWh)
1	Intra-Day Contracts	2.02	8.46
2	Day Ahead Contingency Contracts	305.96	8.20
3	Daily Contracts	115.52	8.36
4	Any Day Single Sided Contracts	64.06	8.58
	Total	487.57	8.29

Source: PXIL

Table-11: VOLUME AND PRICE OF ELECTRICITY IN TERM AHEAD MARKET OF HPX, JANUARY 2024			
Sr.No	Term ahead contracts	Actual Scheduled Volume (MU)	Weighted Average Price (₹/kWh)
1	Intra-Day Contracts	0.57	9.57
2	Day Ahead Contingency Contracts	172.74	8.24
3	Daily Contracts	146.00	6.23
4	Monthly Contracts	72.50	5.20
5	Any Day Single Sided Contracts	149.39	8.14
	Total	541.20	7.27

Source: HPX

Table-12: VOLUME AND PRICE OF ELECTRICITY IN GREEN TERM AHEAD MARKET OF IEX, JANUARY 2024			
Sr. No	Green Term ahead contracts	Actual Scheduled Volume (MU)	Weighted Average Price (₹/kWh)
1	Daily Contracts	9.53	6.10
2	Monthly Contracts	1.86	6.10
3	Any Day Single Sided Contracts	15.25	6.69
	Total	26.64	6.44

Source: IEX

Table-13: VOLUME AND PRICE OF ELECTRICITY IN GREEN TERM AHEAD MARKET OF PXIL, JANUARY 2024			
Sr. No	Green Term ahead contracts	Actual Scheduled Volume (MU)	Weighted Average Price (₹/kWh)
1	Intra-Day Contracts	0.005	10.00
2	Day Ahead Contingency Contracts	2.06	7.05
	Total	2.06	7.06

Source: PXIL

Table-14: VOLUME AND PRICE OF ELECTRICITY IN GREEN TERM AHEAD MARKET OF HPX, JANUARY 2024			
Sr. No	Green Term ahead contracts	Actual Scheduled Volume (MU)	Weighted Average Price (₹/kWh)
1	Day Ahead Contingency Contracts	1.75	6.43
2	Daily Contracts	0.92	5.50
3	Any Day Single Sided Contracts	23.64	6.73
	Total	26.30	6.67

Source: HPX

Table-15: VOLUME AND PRICE OF ELECTRICITY IN HIGH PRICE TERM AHEAD MARKET OF IEX, JANUARY 2024			
Sr. No	High Price Term ahead contracts	Actual Scheduled Volume (MU)	Weighted Average Price (₹/kWh)
1	No Trade	0.00	-
	Total	0.00	-

Source: IEX

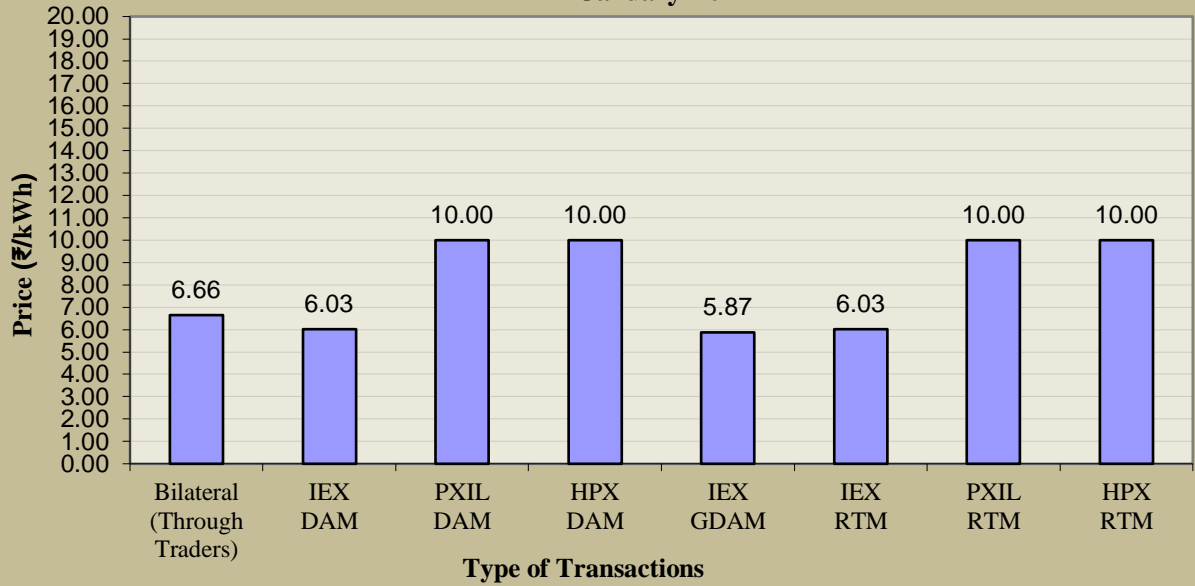
Table-16: VOLUME AND PRICE OF ELECTRICITY IN HIGH PRICE TERM AHEAD MARKET OF PXIL, JANUARY 2024			
Sr. No	High Price Term ahead contracts	Actual Scheduled Volume (MU)	Weighted Average Price (₹/kWh)
1	No Trade	0.00	-
	Total	0.00	-

Source: PXIL

Table-17: VOLUME AND PRICE OF ELECTRICITY IN HIGH PRICE TERM AHEAD MARKET OF HPX, JANUARY 2024			
Sr. No	High Price Term ahead contracts	Actual Scheduled Volume (MU)	Weighted Average Price (₹/kWh)
1	No Trade	0.00	-
	Total	0.00	-

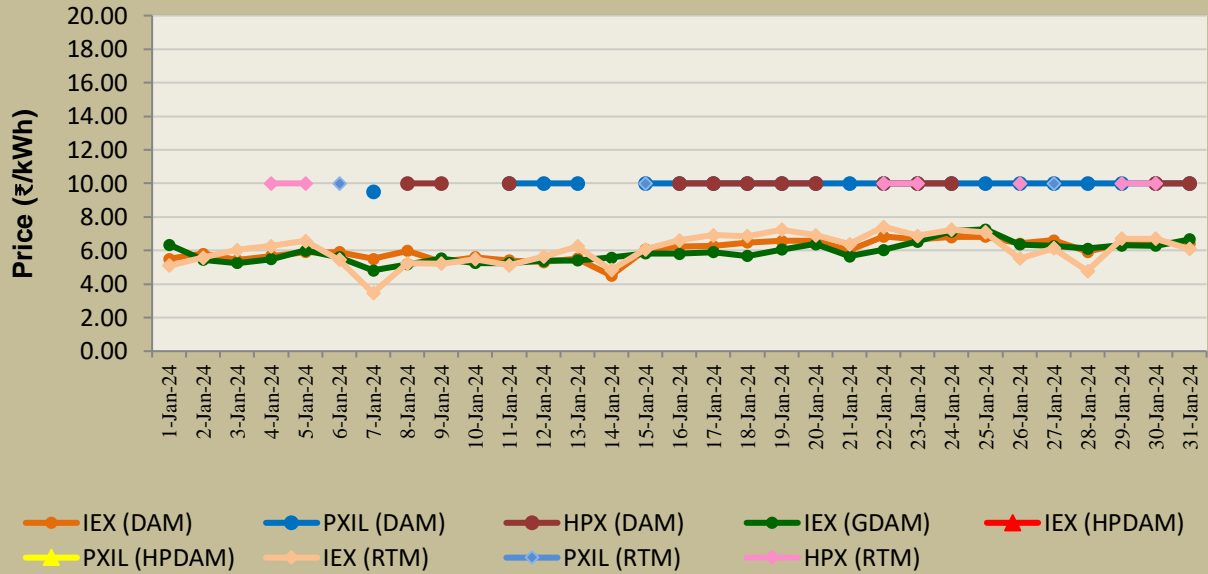
Source: HPX

Figure-6: Weighted Average Price of Short-term Transactions of Electricity, January 2024



Note: No electricity was transacted in G-DAM of PXIL & HPX, and in HP-DAM of all Power Exchanges during January 2024

Figure-7: Weighted Average Price of Short-term Transactions of Electricity, January 2024 (Day-wise)



Note: No electricity was transacted in G-DAM of PXIL & HPX, and in HP-DAM of all Power Exchanges during January 2024

Table-18: VOLUME OF ELECTRICITY SOLD IN DAY AHEAD MARKET THROUGH POWER EXCHANGES, JANUARY 2024

Name of the Entity	Volume of Sale (MUs)	% of Volume
CHHATTISGARH	440.28	7.88
JINDAL STAGE-II	427.06	7.64
ESSAR POWER	388.43	6.95
ARTPP	376.02	6.73
JITPL	330.19	5.91
UTTAR PRADESH	299.49	5.36
GUJARAT	296.34	5.30
RAIGARH_ADANI	251.63	4.50
ODISHA	249.50	4.46
JAYPEE NIGRIE	201.24	3.60
JINDAL POWER	189.06	3.38
DB POWER	167.10	2.99
MP	166.53	2.98
TAMIL NADU	132.27	2.37
DELHI	128.63	2.30
COASTGEN	122.21	2.19
WEST BENGAL	118.63	2.12
MAHARASHTRA	103.75	1.86
SEBPCORP	98.35	1.76
DCPP	90.63	1.62
ACBIL	73.34	1.31
TELANGANA	63.82	1.14
PONDICHERRY	62.23	1.11
MB POWER	60.18	1.08
BIHAR	57.39	1.03
HIMACHAL PRADESH	52.90	0.95
EMCO	51.54	0.92
SIMHAPURI	43.95	0.79
RAJASTHAN	40.12	0.72
ADHUNIK POWER LTD	35.04	0.63
NTPC STATIONS-ER	34.78	0.62
ANDHRA PRADESH	32.55	0.58
SKS POWER	31.06	0.56
SHREE CEMENT	28.26	0.51
IL&FS	27.79	0.50
DHARIWAL POWER	26.59	0.48
HARYANA	25.54	0.46
RENEW_SR_SLR	25.37	0.45
ADANI_WIND	21.79	0.39
RKM POWER	16.92	0.30
KARCHAM WANGTOO	16.72	0.30
BALCO	16.60	0.30
DVC	16.50	0.30
MARUTI COAL	14.61	0.26
ASEJTL_SLR	12.89	0.23
NTPC STATIONS-SR	12.77	0.23
AD HYDRO	12.75	0.23
JHABUA POWER_MP	8.89	0.16
NPGC	6.90	0.12
NTPC STATIONS-NR	6.76	0.12
AMP_GREEN6	6.52	0.12
RENEW_ROSHNI	6.36	0.11
SORANG HEP	6.26	0.11
RENEW_SPRATAP	5.86	0.10

SAINJ HEP	5.49	0.10
OSTRO Hiriyur	5.29	0.09
J & K	5.17	0.09
MEGHALAYA	4.90	0.09
ADANI_4RE	3.31	0.06
SINGOLI BHATWARI HEP	3.30	0.06
KERALA	2.74	0.05
CHANDIGARH	2.70	0.05
GOA	2.37	0.04
TRIPURA	2.33	0.04
RENEW_SVIHAAN	1.93	0.03
NAGALAND	1.74	0.03
MANIPUR	1.63	0.03
NTPC STATIONS-NER	1.10	0.02
RENERGY5_WIND	1.08	0.02
UTTARAKHAND	0.94	0.02
NTPC STATIONS-WR	0.72	0.01
SIKKIM	0.67	0.01
KBUNL	0.53	0.01
LANCO BUDHIL	0.52	0.01
PUNJAB	0.40	0.01
NEEPCO STATIONS	0.36	0.01
GMR KAMALANGA	0.01	0.0002
NLC	0.004	0.0001
Total	5588.15	100.00
Volume sold by top 5 Regional Entities	1961.99	35.11

Table-19: VOLUME OF ELECTRICITY PURCHASED IN DAY AHEAD MARKET THROUGH POWER EXCHANGES, JANUARY 2024		
Name of the Entity	Volume of Purchase (MUs)	% of Volume
TELANGANA	1076.71	19.27
PUNJAB	488.41	8.74
UTTAR PRADESH	472.08	8.45
GUJARAT	416.23	7.45
J & K	370.94	6.64
ANDHRA PRADESH	359.46	6.43
DGPCL Bhutan	326.98	5.85
MAHARASHTRA	285.39	5.11
HARYANA	277.91	4.97
RAJASTHAN	272.92	4.88
UTTARAKHAND	197.16	3.53
TAMIL NADU	193.80	3.47
NEPAL(NVVN)	188.76	3.38
DELHI	83.67	1.50
KERALA	76.23	1.36
AMPS Hazira	70.84	1.27
DD&DNH	65.48	1.17
MP	63.04	1.13
WEST BENGAL	49.03	0.88
KARNATAKA	38.69	0.69
BIHAR	35.15	0.63
NEP	30.14	0.54
MEGHALAYA	24.52	0.44
HIMACHAL PRADESH	22.45	0.40
CHANDIGARH	20.58	0.37
NCR ALLAHABAD	16.92	0.30
DVC	15.59	0.28
GOA	13.34	0.24
ODISHA	9.61	0.17
ASSAM	6.61	0.12
JHARKHAND	6.45	0.12
CHHATTISGARH	5.23	0.09
ARUNACHAL PRADESH	4.34	0.08
NAGALAND	1.33	0.02
BALCO	1.05	0.02
BASOCHHU HEP	0.74	0.01
MB POWER	0.27	0.005
TRIPURA	0.10	0.002
TOTAL	5588.15	100.00
Volume purchased by top 5 Regional Entities	2824.37	50.54

Table-20: VOLUME OF ELECTRICITY SOLD IN GREEN DAY AHEAD MARKET THROUGH POWER EXCHANGES, JANUARY 2024		
Name of the Entity	Volume of Sale (MUs)	% of Volume
ALTRA XERGI	39.35	18.79
ADANI_WIND	23.93	11.42
AYANA_NPKUNTA	19.56	9.34
ANDHRA PRADESH	15.35	7.33
J & K	13.70	6.54
OSTRO Hiriyur	11.88	5.67
MP	11.69	5.58
ADANI_4RE	10.82	5.17
CONTINNUM PT	10.19	4.87
RENEW_ROSHNI	9.74	4.65
MAHARASHTRA	9.38	4.48
RENERGY5_WIND	6.20	2.96
UTTAR PRADESH	5.45	2.60
HIMACHAL PRADESH	4.65	2.22
ASEJTL_SLR	3.06	1.46
RENEW_SR_SLR	3.01	1.44
RAJASTHAN	2.72	1.30
TELANGANA	2.04	0.97
SINGOLI BHATWARI HEP	1.60	0.76
HARYANA	1.38	0.66
RENEW_SPRATAP	1.14	0.54
INOX_BHUJ	0.85	0.41
SORANG HEP	0.64	0.30
SIKKIM	0.52	0.25
RENEW_SVIHAAN	0.42	0.20
WEST BENGAL	0.19	0.09
Total	209.45	100.00
Volume sold by top 5 Regional Entities	111.89	53.42

Table-21: VOLUME OF ELECTRICITY PURCHASED IN GREEN DAY AHEAD MARKET THROUGH POWER EXCHANGES, JANUARY 2024

Name of the Entity	Volume of Purchase (MUs)	% of Volume
AMPS Hazira	62.16	29.68
DELHI	29.12	13.91
MAHARASHTRA	14.36	6.86
TAMIL NADU	13.31	6.35
PUNJAB	12.10	5.78
DVC	10.92	5.21
BALCO	8.87	4.24
KARNATAKA	7.05	3.36
MP	5.90	2.82
UTTAR PRADESH	5.84	2.79
NCR ALLAHABAD	5.83	2.78
ODISHA	5.76	2.75
GUJARAT	5.40	2.58
HARYANA	4.94	2.36
KERALA	4.61	2.20
RAJASTHAN	4.50	2.15
JHARKHAND	3.76	1.80
CHHATTISGARH	2.17	1.04
ANDHRA PRADESH	1.89	0.90
TELANGANA	0.80	0.38
DD&DNH	0.16	0.08
ASSAM	0.01	0.004
TOTAL	209.45	100.00
Volume purchased by top 5 Regional Entities	131.05	62.57

Table-22: VOLUME OF ELECTRICITY SOLD IN REAL TIME MARKET THROUGH POWER EXCHANGES, JANUARY 2024

Name of the Entity	Volume of Sale (MUs)	% of Volume
MP	296.55	12.43
ODISHA	222.18	9.31
BIHAR	160.06	6.71
CHHATTISGARH	153.32	6.42
WEST BENGAL	130.32	5.46
UTTAR PRADESH	104.32	4.37
MAHARASHTRA	95.31	3.99
TAMIL NADU	81.97	3.44
TELANGANA	67.62	2.83
ANDHRA PRADESH	64.56	2.71
NTPC STATIONS-WR	62.30	2.61
ASSAM	59.47	2.49
DELHI	58.25	2.44
NTPC STATIONS-ER	52.30	2.19
NTPC STATIONS-NR	51.61	2.16
SEBPCORP	49.45	2.07
JHARKHAND	49.28	2.07
GUJARAT	39.16	1.64
RAJASTHAN	35.74	1.50
PONDICHERRY	33.62	1.41
BALCO	27.60	1.16
NTPC STATIONS-SR	26.95	1.13
MTPS	26.21	1.10
TRIPURA	26.15	1.10
KERALA	22.18	0.93
ARTPP	19.25	0.81
PUNJAB	17.38	0.73
DVC	15.74	0.66
JHABUA POWER_MP	15.36	0.64
TRN ENERGY	15.29	0.64
BASOCHHU HEP	14.21	0.60
HARYANA	14.12	0.59
SIMHAPURI	13.44	0.56
J & K	11.55	0.48
NEEPCO STATIONS	11.18	0.47
ACBIL	10.84	0.45
RKM POWER	10.74	0.45
EMCO	10.74	0.45
HIMACHAL PRADESH	10.09	0.42
ONEVOLT	9.49	0.40
GRIAN	9.23	0.39
JINDAL STAGE-II	9.02	0.38
SKS POWER	8.99	0.38
NPGC	8.96	0.38
IL&FS	8.91	0.37
AMP_GREEN6	8.32	0.35
AMPLUS_AGES	7.99	0.33
NLC	7.53	0.32
ASEJTL_SLR	7.15	0.30
ESSAR POWER	6.84	0.29
SIKKIM	6.66	0.28
RENEW_SR_SLR	6.37	0.27
MB POWER	6.17	0.26
JINDAL POWER	6.07	0.25

ADANI_WIND	5.09	0.21
UTTARAKHAND	4.91	0.21
MARUTI COAL	4.90	0.21
RAIGARH_ADANI	4.80	0.20
DCPP	4.75	0.20
DD&DNH	4.33	0.18
ADHUNIK POWER LTD	4.17	0.17
ARUNACHAL PRADESH	4.06	0.17
IGSTPS	4.06	0.17
JITPL	3.88	0.16
ALTRA XERGI	3.69	0.15
NREL_DAYAPAR (W)	3.66	0.15
SASAN UMPP	3.04	0.13
RENEW_ROSHNI	2.83	0.12
RENEW_SPRATAP	2.70	0.11
SHREE CEMENT	2.30	0.10
NTPC STATIONS-NER	2.26	0.09
ONGC PALATANA	1.85	0.08
DB POWER	1.69	0.07
RGPPL_IR	1.56	0.07
ADANI_4RE	1.47	0.06
KARNATAKA	1.38	0.06
GOA	1.36	0.06
RENEW_SVIHAAN	1.18	0.05
JAYPEE NIGRIE	1.14	0.05
AYANA_NPKUNTA	1.01	0.04
DHARIWAL POWER	0.84	0.04
MEGHALAYA	0.77	0.03
OSTRO Hiriyur	0.47	0.02
MAITHON POWER LTD	0.40	0.02
RENERGY5_WIND	0.35	0.01
KARCHAM WANGTOO	0.29	0.01
CHANDIGARH	0.24	0.01
TASHIDENG HEP	0.20	0.01
JORETHANG	0.15	0.01
NEPAL(NVVN)	0.15	0.01
DOYANG HEP	0.15	0.01
SINGOLI BHATWARI HEP	0.15	0.01
PARE HEP	0.04	0.002
RANGANADI HEP	0.04	0.002
LANCO BUDHIL	0.02	0.001
SORANG HEP	0.02	0.001
GMR KAMALANGA	0.01	0.0003
Total	2386.44	100.00
Volume sold by top 5 Regional Entities	962.44	40.33

Table-23: VOLUME OF ELECTRICITY PURCHASED IN REAL TIME MARKET THROUGH POWER EXCHANGES, JANUARY 2024

Name of the Entity	Volume of Purchase (MUs)	% of Volume
PUNJAB	590.82	24.76
TELANGANA	267.95	11.23
RAJASTHAN	185.92	7.79
UTTAR PRADESH	159.44	6.68
KERALA	125.06	5.24
J & K	124.35	5.21
MAHARASHTRA	120.61	5.05
ANDHRA PRADESH	84.82	3.55
HARYANA	78.18	3.28
WEST BENGAL	78.14	3.27
DVC	75.92	3.18
DELHI	72.48	3.04
HIMACHAL PRADESH	53.89	2.26
GUJARAT	52.68	2.21
TAMIL NADU	49.83	2.09
UTTARAKHAND	39.65	1.66
ODISHA	38.11	1.60
MP	27.46	1.15
BIHAR	26.66	1.12
AMPS Hazira	18.32	0.77
JHARKHAND	18.05	0.76
DD&DNH	13.71	0.57
KARNATAKA	12.05	0.51
DGPCL Bhutan	9.81	0.41
NEPAL(NVVN)	8.95	0.37
ASSAM	7.96	0.33
ESSAR POWER	7.16	0.30
ARUNACHAL PRADESH	6.94	0.29
MEGHALAYA	6.09	0.26
CHHATTISGARH	4.88	0.20
SIMHAPURI	3.33	0.14
CHANDIGARH	2.43	0.10
NCR ALLAHABAD	2.30	0.10
ARTPP	2.23	0.09
JINDAL POWER	2.23	0.09
GOA	2.09	0.09
NTPC STATIONS-WR	1.43	0.06
JINDAL STAGE-II	1.03	0.04
RGPPL_IR	0.71	0.03
MB POWER	0.70	0.03
NEP	0.64	0.03
BASOCHHU HEP	0.27	0.01
NAGALAND	0.25	0.01
EMCO	0.23	0.01
ACBIL	0.23	0.01
JHABUA POWER_MP	0.21	0.01
MANIPUR	0.16	0.01
SIKKIM	0.06	0.002
PONDICHERRY	0.01	0.0003
TRIPURA	0.003	0.0001
TOTAL	2386.44	100.00
Volume purchased by top 5 Regional Entities	1329.18	55.70

Table-24: TOTAL VOLUME OF NET TRANSACTIONS THROUGH POWER EXCHANGES (REGIONAL ENTITY-WISE), JANUARY 2024

S. No.	Name of the Entity	Total volume of net transactions through Power Exchanges*
1	TELANGANA	1211.97
2	PUNJAB	1073.55
3	J & K	464.87
4	RAJASTHAN	384.75
5	DGPCL Bhutan	336.79
6	ANDHRA PRADESH	333.71
7	HARYANA	319.98
8	UTTARAKHAND	230.96
9	UTTAR PRADESH	228.09
10	MAHARASHTRA	211.92
11	NEPAL(NVVN)	197.56
12	KERALA	180.98
13	AMPS Hazira	151.32
14	GUJARAT	138.81
15	DD&DNH	75.02
16	DVC	70.20
17	KARNATAKA	56.42
18	TAMIL NADU	42.70
19	NEP	30.78
20	NCR ALLAHABAD	25.05
21	MEGHALAYA	24.95
22	CHANDIGARH	20.06
23	GOA	11.70
24	HIMACHAL PRADESH	8.70
25	ARUNACHAL PRADESH	7.22
26	GMR KAMALANGA	-0.02
27	RANGANADI HEP	-0.04
28	PARE HEP	-0.04
29	DOYANG HEP	-0.15
30	NAGALAND	-0.15
31	JORETHANG	-0.15
32	TASHIDENG HEP	-0.20
33	MAITHON POWER LTD	-0.40
34	KBUNL	-0.53
35	LANCO BUDHIL	-0.54
36	RGPLL_IR	-0.85
37	INOX_BHUJ	-0.85
38	MANIPUR	-1.48
39	DELHI	-1.60
40	ONGC PALATANA	-1.85
41	SASAN UMPP	-3.04
42	NTPC STATIONS-NER	-3.35
43	RENEW_SVIHAAN	-3.52
44	NREL_DAYAPAR (W)	-3.66
45	IGSTPS	-4.06
46	SINGOLI BHATWARI HEP	-5.05
47	SAINJ HEP	-5.49
48	SORANG HEP	-6.92
49	NLC	-7.53
50	RENERGY5_WIND	-7.62
51	SIKKIM	-7.79
52	AMPLUS_AGES	-7.99
53	GRIAN	-9.23
54	ONEVOLT	-9.49
55	RENEW_SPRATAP	-9.69
56	CONTINNUM PT	-10.19
57	NEEPCO STATIONS	-11.54
58	AD HYDRO	-12.75
59	BASOCHHU HEP	-13.20
60	AMP_GREEN6	-14.84
61	TRN ENERGY	-15.29
62	ADANI_4RE	-15.60

63	NPGC	-15.86
64	KARCHAM WANGTOO	-17.01
65	OSTRO Hiriyur	-17.63
66	RENEW_ROSHNI	-18.93
67	MARUTI COAL	-19.51
68	AYANA_NPKUNTA	-20.57
69	JHARKHAND	-21.02
70	ASEJTL_SLR	-23.11
71	JHABUA POWER_MP	-24.03
72	MTPS	-26.21
73	DHARIWAL POWER	-27.43
74	RKM POWER	-27.66
75	TRIPURA	-28.38
76	SHREE CEMENT	-30.56
77	BALCO	-34.27
78	RENEW_SR_SLR	-34.75
79	IL&FS	-36.70
80	ADHUNIK POWER LTD	-39.20
81	NTPC STATIONS-SR	-39.73
82	SKS POWER	-40.05
83	ALTRA XERGI	-43.04
84	ASSAM	-44.89
85	ADANI_WIND	-50.82
86	SIMHAPURI	-54.06
87	NTPC STATIONS-NR	-58.37
88	NTPC STATIONS-WR	-61.60
89	EMCO	-62.04
90	MB POWER	-65.37
91	ACBIL	-83.96
92	NTPC STATIONS-ER	-87.08
93	DCPP	-95.38
94	PONDICHERRY	-95.85
95	WEST BENGAL	-121.97
96	COASTGEN	-122.21
97	SEMBCORP	-147.79
98	BIHAR	-155.63
99	DB POWER	-168.79
100	JINDAL POWER	-192.90
101	JAYPEE NIGRIE	-202.38
102	RAIGARH_ADANI	-256.43
103	JITPL	-334.07
104	MP	-378.37
105	ESSAR POWER	-388.12
106	ARTPP	-393.04
107	ODISHA	-418.20
108	JINDAL STAGE-II	-435.06
109	CHHATTISGARH	-581.32
* Total net includes net of transactions of electricity through various segments on power exchanges		
(-) indicates sale and (+) indicates purchase		

Table-25: DETAILS OF CONGESTION IN POWER EXCHANGES, JANUARY 2024

	Details of Congestion	Day Ahead Market			Green Day Ahead Market			High Price Day Ahead Market			Real Time Market		
		IEX	PXIL	HPX	IEX	PXIL	HPX	IEX	PXIL	HPX	IEX	PXIL	HPX
1	Unconstrained Cleared Volume (MUs)	5561.85	17.19	9.11	209.45	0.00	0.00	0.00	0.00	0.00	2382.43	0.57	5.97
2	Actual Cleared Volume and hence scheduled (MUs)	5561.85	17.19	9.11	209.45	0.00	0.00	0.00	0.00	0.00	2379.90	0.57	5.97
3	Volume of electricity that could not be cleared and hence not scheduled because of congestion (MUs) *	0.00	0.00	0.00	0.00	0.00	0.00	0.00	0.00	0.00	2.52	0.00	0.00
4	Volume of electricity that could not be cleared and hence not scheduled because of reasons other than congestion (MUs)	0.00	0.00	0.00	0.00	0.00	0.00	0.00	0.00	0.00	0.00	0.00	0.00
5	Volume of electricity that could not be cleared as % to Unconstrained Cleared Volume	0.00%	0.00%	0.00%	0.00%	0.00%	0.00%	0.00%	0.00%	0.00%	0.11%	0.00%	0.00%
6	Percentage of the time congestion occurred during the month (Number of hours congestion occurred/ Total number of hours in the month)	0.00%	0.00%	0.00%	0.00%	0.00%	0.00%	0.00%	0.00%	0.00%	0.24%	0.00%	0.00%
7	Congestion occurrence (%) time block wise												
	0.00 - 6.00 hours	0.00%	0.00%	0.00%	0.00%	0.00%	0.00%	0.00%	0.00%	0.00%	0.00%	0.00%	0.00%
	6.00 - 12.00 hours	0.00%	0.00%	0.00%	0.00%	0.00%	0.00%	0.00%	0.00%	0.00%	0.00%	0.00%	0.00%
	12.00 - 18.00 hours	0.00%	0.00%	0.00%	0.00%	0.00%	0.00%	0.00%	0.00%	0.00%	0.00%	0.00%	0.00%
	18.00 - 24.00 hours	0.00%	0.00%	0.00%	0.00%	0.00%	0.00%	0.00%	0.00%	0.00%	100.00%	0.00%	0.00%

* This power would have been scheduled had there been no congestion

Source: IEX, PXIL, HPX & NLDC

Table-26: VOLUME OF TRANSACTIONS THROUGH POWER EXCHANGES (DAY-WISE) (MUs), JANUARY 2024

Date	Day Ahead Market [#]			Green Day Ahead Market [#]			High Price DAM [#]			Real Time Market [#]			Total Electricity Generation (MU) *
	IEX	PXIL	HPX	IEX	PXIL	HPX	IEX	PXIL	HPX	IEX	PXIL	HPX	
1-Jan-24	177.61	0.00	0.00	5.49	0.00	0.00	0.00	0.00	0.00	73.95	0.00	0.00	3924.03
2-Jan-24	165.87	0.00	0.00	7.12	0.00	0.00	0.00	0.00	0.00	76.57	0.00	0.00	4037.41
3-Jan-24	158.15	0.00	0.00	6.59	0.00	0.00	0.00	0.00	0.00	76.44	0.00	0.00	4110.91
4-Jan-24	175.98	0.00	0.00	6.28	0.00	0.00	0.00	0.00	0.00	69.15	0.00	0.33	4125.97
5-Jan-24	180.63	0.00	0.00	5.21	0.00	0.00	0.00	0.00	0.00	77.31	0.00	0.10	4121.29
6-Jan-24	175.62	0.00	0.00	6.50	0.00	0.00	0.00	0.00	0.00	94.91	0.08	0.00	3991.34
7-Jan-24	177.34	0.04	0.00	8.00	0.00	0.00	0.00	0.00	0.00	78.82	0.00	0.00	3793.85
8-Jan-24	169.73	0.00	0.76	7.89	0.00	0.00	0.00	0.00	0.00	88.67	0.00	0.00	3975.65
9-Jan-24	176.33	0.00	0.76	8.41	0.00	0.00	0.00	0.00	0.00	100.01	0.00	0.00	3949.47
10-Jan-24	195.50	0.00	0.00	8.53	0.00	0.00	0.00	0.00	0.00	82.72	0.00	0.00	4020.53
11-Jan-24	197.34	0.20	0.71	6.92	0.00	0.00	0.00	0.00	0.00	81.68	0.00	0.00	4008.46
12-Jan-24	195.87	0.33	0.00	6.22	0.00	0.00	0.00	0.00	0.00	80.83	0.00	0.00	4097.89
13-Jan-24	185.32	0.23	0.00	6.02	0.00	0.00	0.00	0.00	0.00	87.03	0.00	0.00	4180.41
14-Jan-24	178.29	0.00	0.00	5.10	0.00	0.00	0.00	0.00	0.00	78.54	0.00	0.00	3958.61
15-Jan-24	174.44	0.56	0.00	7.97	0.00	0.00	0.00	0.00	0.00	81.72	0.01	0.00	4007.16
16-Jan-24	165.87	1.03	0.88	6.27	0.00	0.00	0.00	0.00	0.00	76.51	0.00	0.00	4126.36
17-Jan-24	171.06	1.00	0.79	5.80	0.00	0.00	0.00	0.00	0.00	73.13	0.00	0.00	4197.61
18-Jan-24	175.15	1.05	0.79	6.43	0.00	0.00	0.00	0.00	0.00	72.44	0.00	0.00	4240.01
19-Jan-24	173.02	0.30	0.79	5.38	0.00	0.00	0.00	0.00	0.00	71.94	0.00	0.00	4265.02
20-Jan-24	170.27	0.61	0.79	6.32	0.00	0.00	0.00	0.00	0.00	66.62	0.00	0.00	4276.88
21-Jan-24	172.80	0.80	0.00	8.86	0.00	0.00	0.00	0.00	0.00	79.33	0.00	0.00	4178.05
22-Jan-24	177.95	0.75	0.67	7.34	0.00	0.00	0.00	0.00	0.00	72.29	0.40	4.04	4222.91
23-Jan-24	174.00	0.76	0.67	6.01	0.00	0.00	0.00	0.00	0.00	78.84	0.00	0.45	4276.82
24-Jan-24	183.78	0.30	0.67	5.88	0.00	0.00	0.00	0.00	0.00	73.49	0.00	0.00	4302.20
25-Jan-24	185.66	0.59	0.00	6.32	0.00	0.00	0.00	0.00	0.00	84.65	0.00	0.00	4306.16
26-Jan-24	194.58	2.73	0.00	7.54	0.00	0.00	0.00	0.00	0.00	78.83	0.00	0.37	4077.71
27-Jan-24	178.44	1.82	0.00	8.88	0.00	0.00	0.00	0.00	0.00	81.57	0.09	0.00	4116.41
28-Jan-24	197.60	1.23	0.00	7.57	0.00	0.00	0.00	0.00	0.00	59.40	0.00	0.00	4144.26
29-Jan-24	196.28	1.58	0.00	6.98	0.00	0.00	0.00	0.00	0.00	66.96	0.00	0.49	4220.52
30-Jan-24	182.38	0.96	0.43	7.04	0.00	0.00	0.00	0.00	0.00	59.43	0.00	0.19	4293.22
31-Jan-24	178.97	0.35	0.43	4.58	0.00	0.00	0.00	0.00	0.00	56.13	0.00	0.00	4221.52
Total	5561.85	17.19	9.11	209.45	0.00	0.00	0.00	0.00	0.00	2379.90	0.57	5.97	127768.64

Source: NLDC

* As available on CEA Website. Gross Electricity Generation excluding electricity generation from renewables and captive power plants.

[#] Scheduled volume of all the bid areas.

Note: With change in the regime on implementation of GNA Regulations from 1st October 2023, the volume reported here is not strictly comparable to the volumes in previous months. Some discrepancies were identified by CERC in the data provided by NLDC which prompted further validation. The volume herein is computed after verification with the volumes reported by the Trading Licensees and the Power Exchanges, and are subject to further revision. The Commission has directed NLDC, vide letter dated 05.01.2024, to make necessary provisions to differentiate the type of transactions under GNA and T-GNA at the earliest. In the interim, the columns for daily volume of bilateral transactions have been omitted from this table.

Table-27(a): PRICE OF DAY AHEAD TRANSACTIONS OF ELECTRICITY (DAY-WISE) (₹/kWh), JANUARY 2024									
Market Segment	Day Ahead Market of IEX			Day Ahead Market of PXIL			Day Ahead Market of HPX		
Date	Minimum ACP	Maximum ACP	WA Price*	Minimum ACP	Maximum ACP	WA Price*	Minimum ACP	Maximum ACP	WA Price*
1-Jan-24	2.34	10.00	5.51	-	-	-	-	-	-
2-Jan-24	2.45	10.00	5.80	-	-	-	-	-	-
3-Jan-24	1.87	10.00	5.43	-	-	-	-	-	-
4-Jan-24	2.00	10.00	5.67	-	-	-	-	-	-
5-Jan-24	2.00	10.00	5.89	-	-	-	-	-	-
6-Jan-24	2.01	10.00	5.90	-	-	-	-	-	-
7-Jan-24	2.00	10.00	5.51	9.50	9.50	9.50	-	-	-
8-Jan-24	2.45	10.00	5.98	-	-	-	10.00	10.00	10.00
9-Jan-24	2.00	10.00	5.32	-	-	-	10.00	10.00	10.00
10-Jan-24	2.50	10.00	5.60	-	-	-	-	-	-
11-Jan-24	2.18	10.00	5.40	10.00	10.00	10.00	10.00	10.00	10.00
12-Jan-24	2.50	10.00	5.31	10.00	10.00	10.00	-	-	-
13-Jan-24	2.73	10.00	5.52	10.00	10.00	10.00	-	-	-
14-Jan-24	2.96	10.00	4.51	-	-	-	-	-	-
15-Jan-24	2.71	10.00	6.05	10.00	10.00	10.00	-	-	-
16-Jan-24	2.90	10.00	6.22	10.00	10.00	10.00	10.00	10.00	10.00
17-Jan-24	2.75	10.00	6.27	10.00	10.00	10.00	10.00	10.00	10.00
18-Jan-24	3.00	10.00	6.48	10.00	10.00	10.00	10.00	10.00	10.00
19-Jan-24	2.64	10.00	6.57	10.00	10.00	10.00	10.00	10.00	10.00
20-Jan-24	2.80	10.00	6.58	10.00	10.00	10.00	10.00	10.00	10.00
21-Jan-24	2.79	10.00	6.00	10.00	10.00	10.00	-	-	-
22-Jan-24	2.51	10.00	6.84	10.00	10.00	10.00	10.00	10.00	10.00
23-Jan-24	2.49	10.00	6.67	10.00	10.00	10.00	10.00	10.00	10.00
24-Jan-24	2.56	10.00	6.81	10.00	10.00	10.00	10.00	10.00	10.00
25-Jan-24	2.51	10.00	6.81	10.00	10.00	10.00	-	-	-
26-Jan-24	2.80	10.00	6.41	10.00	10.00	10.00	-	-	-
27-Jan-24	2.75	10.00	6.61	10.00	10.00	10.00	-	-	-
28-Jan-24	2.60	10.00	5.92	10.00	10.00	10.00	-	-	-
29-Jan-24	2.70	10.00	6.39	10.00	10.00	10.00	-	-	-
30-Jan-24	2.80	10.00	6.51	10.00	10.00	10.00	10.00	10.00	10.00
31-Jan-24	2.90	10.00	6.40	10.00	10.00	10.00	10.00	10.00	10.00
	1.87[#]	10.00[#]	6.03	9.50[#]	10.00[#]	10.00	10.00[#]	10.00[#]	10.00

Source: IEX, PXIL and HPX

* Weighted average price computed based on Area Clearing Volume (ACV) and Area Clearing Price (ACP) for each hour of the day. Here, ACV and ACP represent the scheduled volume and weighted average price of all the bid areas of power exchanges.

Maximum/Minimum in the month

**Table-27(b): PRICE OF GREEN DAY AHEAD TRANSACTIONS OF ELECTRICITY (DAY-WISE) (₹/kWh),
JANUARY 2024**

Market Segment	Green Day Ahead Market of IEX			Green Day Ahead Market of PXIL			Green Day Ahead Market of HPX		
	Date	Minimum ACP	Maximum ACP	Weighted Average Price*	Minimum ACP	Maximum ACP	Weighted Average Price*	Minimum ACP	Maximum ACP
1-Jan-24	3.50	10.00	6.35	-	-	-	-	-	-
2-Jan-24	3.50	10.00	5.45	-	-	-	-	-	-
3-Jan-24	3.90	10.00	5.25	-	-	-	-	-	-
4-Jan-24	3.90	10.00	5.49	-	-	-	-	-	-
5-Jan-24	3.90	10.00	5.99	-	-	-	-	-	-
6-Jan-24	3.50	10.00	5.60	-	-	-	-	-	-
7-Jan-24	3.32	10.00	4.82	-	-	-	-	-	-
8-Jan-24	3.73	10.00	5.18	-	-	-	-	-	-
9-Jan-24	3.60	10.00	5.53	-	-	-	-	-	-
10-Jan-24	3.30	10.00	5.25	-	-	-	-	-	-
11-Jan-24	3.20	10.00	5.25	-	-	-	-	-	-
12-Jan-24	3.80	10.00	5.39	-	-	-	-	-	-
13-Jan-24	3.80	10.00	5.40	-	-	-	-	-	-
14-Jan-24	3.90	10.00	5.58	-	-	-	-	-	-
15-Jan-24	3.80	10.00	5.83	-	-	-	-	-	-
16-Jan-24	3.90	10.00	5.81	-	-	-	-	-	-
17-Jan-24	3.90	10.00	5.91	-	-	-	-	-	-
18-Jan-24	3.70	10.00	5.68	-	-	-	-	-	-
19-Jan-24	3.90	10.00	6.06	-	-	-	-	-	-
20-Jan-24	3.90	10.00	6.38	-	-	-	-	-	-
21-Jan-24	3.61	10.00	5.65	-	-	-	-	-	-
22-Jan-24	3.62	10.00	6.03	-	-	-	-	-	-
23-Jan-24	3.85	10.00	6.53	-	-	-	-	-	-
24-Jan-24	3.90	10.00	7.14	-	-	-	-	-	-
25-Jan-24	3.85	10.00	7.27	-	-	-	-	-	-
26-Jan-24	3.85	10.00	6.35	-	-	-	-	-	-
27-Jan-24	3.70	10.00	6.26	-	-	-	-	-	-
28-Jan-24	3.20	10.00	6.10	-	-	-	-	-	-
29-Jan-24	3.73	10.00	6.30	-	-	-	-	-	-
30-Jan-24	3.50	10.00	6.29	-	-	-	-	-	-
31-Jan-24	3.80	10.00	6.67	-	-	-	-	-	-
	3.20[#]	10.00[#]	5.87	-	-	-	-	-	-

Source: IEX, PXIL and HPX

* Weighted average price computed based on Area Clearing Volume (ACV) and Area Clearing Price (ACP) for each hour of the day. Here, ACV and ACP represent the scheduled volume and weighted average price of all the bid areas of power exchanges.

Maximum/Minimum in the month

Table-27(c): PRICE OF REAL TIME TRANSACTIONS OF ELECTRICITY (DAY-WISE) (₹/kWh), JANUARY 2024

Market Segment	Real Time Market of IEX			Real Time Market of PXIL			Real Time Market of HPX		
	Date	Minimum ACP	Maximum ACP	Weighted Average Price*	Minimum ACP	Maximum ACP	Weighted Average Price*	Minimum ACP	Maximum ACP
1-Jan-24	1.71	10.00	5.09	-	-	-	-	-	-
2-Jan-24	1.85	10.00	5.57	-	-	-	-	-	-
3-Jan-24	2.34	10.00	6.03	-	-	-	-	-	-
4-Jan-24	1.87	10.00	6.26	-	-	-	10.00	10.00	10.00
5-Jan-24	1.85	10.00	6.57	-	-	-	10.00	10.00	10.00
6-Jan-24	1.71	10.00	5.44	10.00	10.00	10.00	-	-	-
7-Jan-24	1.68	7.22	3.47	-	-	-	-	-	-
8-Jan-24	1.62	10.00	5.24	-	-	-	-	-	-
9-Jan-24	1.79	10.00	5.22	-	-	-	-	-	-
10-Jan-24	1.65	10.00	5.49	-	-	-	-	-	-
11-Jan-24	1.79	10.00	5.13	-	-	-	-	-	-
12-Jan-24	1.77	10.00	5.64	-	-	-	-	-	-
13-Jan-24	2.80	10.00	6.25	-	-	-	-	-	-
14-Jan-24	3.00	10.00	4.84	-	-	-	-	-	-
15-Jan-24	2.31	10.00	6.08	10.00	10.00	10.00	-	-	-
16-Jan-24	2.92	10.00	6.60	-	-	-	-	-	-
17-Jan-24	2.93	10.00	6.91	-	-	-	-	-	-
18-Jan-24	2.85	10.00	6.85	-	-	-	-	-	-
19-Jan-24	2.85	10.00	7.24	-	-	-	-	-	-
20-Jan-24	2.89	10.00	6.91	-	-	-	-	-	-
21-Jan-24	2.60	10.00	6.38	-	-	-	-	-	-
22-Jan-24	2.85	10.00	7.41	10.00	10.00	10.00	10.00	10.00	10.00
23-Jan-24	2.50	10.00	6.88	-	-	-	10.00	10.00	10.00
24-Jan-24	2.95	10.00	7.23	-	-	-	-	-	-
25-Jan-24	2.59	10.00	7.09	-	-	-	-	-	-
26-Jan-24	2.30	10.00	5.52	-	-	-	10.00	10.00	10.00
27-Jan-24	1.30	10.00	6.13	10.00	10.00	10.00	-	-	-
28-Jan-24	2.85	10.00	4.79	-	-	-	-	-	-
29-Jan-24	2.18	10.00	6.70	-	-	-	10.00	10.00	10.00
30-Jan-24	2.95	10.00	6.71	-	-	-	10.00	10.00	10.00
31-Jan-24	2.40	10.00	6.10	-	-	-	-	-	-
	1.30[#]	10.00[#]	6.03	10.00[#]	10.00[#]	10.00	10.00[#]	10.00[#]	10.00

Source: IEX, PXIL and HPX

* Weighted average price computed based on Area Clearing Volume (ACV) and Area Clearing Price (ACP) for each hour of the day. Here, ACV and ACP represent the scheduled volume and weighted average price of all the bid areas of power exchanges.

Maximum/Minimum in the month

**Table-27(d): PRICE OF HIGH PRICE DAY AHEAD TRANSACTIONS OF ELECTRICITY (DAY-WISE) (₹/kWh),
JANUARY 2024**

Market Segment	High Price Day Ahead Market of IEX			High Price Day Ahead Market of PXIL			High Price Day Ahead Market of HPX		
	Minimum ACP	Maximum ACP	Weighted Average Price*	Minimum ACP	Maximum ACP	Weighted Average Price*	Minimum ACP	Maximum ACP	Weighted Average Price*
1-Jan-24	-	-	-	-	-	-	-	-	-
2-Jan-24	-	-	-	-	-	-	-	-	-
3-Jan-24	-	-	-	-	-	-	-	-	-
4-Jan-24	-	-	-	-	-	-	-	-	-
5-Jan-24	-	-	-	-	-	-	-	-	-
6-Jan-24	-	-	-	-	-	-	-	-	-
7-Jan-24	-	-	-	-	-	-	-	-	-
8-Jan-24	-	-	-	-	-	-	-	-	-
9-Jan-24	-	-	-	-	-	-	-	-	-
10-Jan-24	-	-	-	-	-	-	-	-	-
11-Jan-24	-	-	-	-	-	-	-	-	-
12-Jan-24	-	-	-	-	-	-	-	-	-
13-Jan-24	-	-	-	-	-	-	-	-	-
14-Jan-24	-	-	-	-	-	-	-	-	-
15-Jan-24	-	-	-	-	-	-	-	-	-
16-Jan-24	-	-	-	-	-	-	-	-	-
17-Jan-24	-	-	-	-	-	-	-	-	-
18-Jan-24	-	-	-	-	-	-	-	-	-
19-Jan-24	-	-	-	-	-	-	-	-	-
20-Jan-24	-	-	-	-	-	-	-	-	-
21-Jan-24	-	-	-	-	-	-	-	-	-
22-Jan-24	-	-	-	-	-	-	-	-	-
23-Jan-24	-	-	-	-	-	-	-	-	-
24-Jan-24	-	-	-	-	-	-	-	-	-
25-Jan-24	-	-	-	-	-	-	-	-	-
26-Jan-24	-	-	-	-	-	-	-	-	-
27-Jan-24	-	-	-	-	-	-	-	-	-
28-Jan-24	-	-	-	-	-	-	-	-	-
29-Jan-24	-	-	-	-	-	-	-	-	-
30-Jan-24	-	-	-	-	-	-	-	-	-
31-Jan-24	-	-	-	-	-	-	-	-	-
	-	-	-	-	-	-	-	-	-

Source: IEX, PXIL and HPX

* Weighted average price computed based on Area Clearing Volume (ACV) and Area Clearing Price (ACP) for each hour of the day. Here, ACV and ACP represent the scheduled volume and weighted average price of all the bid areas of power exchanges.

Maximum/Minimum in the month

**Table-28: VOLUME OF TRANSACTIONS THROUGH POWER EXCHANGES (REGIONAL ENTITY*-WISE) (MUs),
JANUARY 2024**

Name of the Entity	Through DAM		Through GDAM		Through HP-DAM		Through RTM		Total Net***
	Sale	Purchase	Sale	Purchase	Sale	Purchase	Sale	Purchase	
PUNJAB	0.40	488.41	0.00	12.10	0.00	0.00	17.38	590.82	1073.55
HARYANA	25.54	277.91	1.38	4.94	0.00	0.00	14.12	78.18	319.98
RAJASTHAN	40.12	272.92	2.72	4.50	0.00	0.00	35.74	185.92	384.75
DELHI	128.63	83.67	0.00	29.12	0.00	0.00	58.25	72.48	-1.60
UTTAR PRADESH	299.49	472.08	5.45	5.84	0.00	0.00	104.32	159.44	228.09
UTTARAKHAND	0.94	197.16	0.00	0.00	0.00	0.00	4.91	39.65	230.96
HIMACHAL PRADESH	52.90	22.45	4.65	0.00	0.00	0.00	10.09	53.89	8.70
J & K	5.17	370.94	13.70	0.00	0.00	0.00	11.55	124.35	464.87
CHANDIGARH	2.70	20.58	0.00	0.00	0.00	0.00	0.24	2.43	20.06
MP	166.53	63.04	11.69	5.90	0.00	0.00	296.55	27.46	-378.37
MAHARASHTRA	103.75	285.39	9.38	14.36	0.00	0.00	95.31	120.61	211.92
GUJARAT	296.34	416.23	0.00	5.40	0.00	0.00	39.16	52.68	138.81
CHHATTISGARH	440.28	5.23	0.00	2.17	0.00	0.00	153.32	4.88	-581.32
GOA	2.37	13.34	0.00	0.00	0.00	0.00	1.36	2.09	11.70
DD&DNH	0.00	65.48	0.00	0.16	0.00	0.00	4.33	13.71	75.02
ANDHRA PRADESH	32.55	359.46	15.35	1.89	0.00	0.00	64.56	84.82	333.71
KARNATAKA	0.00	38.69	0.00	7.05	0.00	0.00	1.38	12.05	56.42
KERALA	2.74	76.23	0.00	4.61	0.00	0.00	22.18	125.06	180.98
TAMIL NADU	132.27	193.80	0.00	13.31	0.00	0.00	81.97	49.83	42.70
PONDICHERY	62.23	0.00	0.00	0.00	0.00	0.00	33.62	0.01	-95.85
TELANGANA	63.82	1076.71	2.04	0.80	0.00	0.00	67.62	267.95	1211.97
WEST BENGAL	118.63	49.03	0.19	0.00	0.00	0.00	130.32	78.14	-121.97
ODISHA	249.50	9.61	0.00	5.76	0.00	0.00	222.18	38.11	-418.20
BIHAR	57.39	35.15	0.00	0.00	0.00	0.00	160.06	26.66	-155.63
JHARKHAND	0.00	6.45	0.00	3.76	0.00	0.00	49.28	18.05	-21.02
SIKKIM	0.67	0.00	0.52	0.00	0.00	0.00	6.66	0.06	-7.79
DVC	16.50	15.59	0.00	10.92	0.00	0.00	15.74	75.92	70.20
ARUNACHAL P	0.00	4.34	0.00	0.00	0.00	0.00	4.06	6.94	7.22
ASSAM	0.00	6.61	0.00	0.01	0.00	0.00	59.47	7.96	-44.89
MANIPUR	1.63	0.00	0.00	0.00	0.00	0.00	0.00	0.16	-1.48
MEGHALAYA	4.90	24.52	0.00	0.00	0.00	0.00	0.77	6.09	24.95
MIZORAM	0.00	0.00	0.00	0.00	0.00	0.00	0.00	0.00	0.00
NAGALAND	1.74	1.33	0.00	0.00	0.00	0.00	0.00	0.25	-0.15
TRIPURA	2.33	0.10	0.00	0.00	0.00	0.00	26.15	0.00	-28.38
NTPC STATIONS-NR	6.76	0.00	0.00	0.00	0.00	0.00	51.61	0.00	-58.37
NEP	0.00	30.14	0.00	0.00	0.00	0.00	0.00	0.64	30.78
AD HYDRO	12.75	0.00	0.00	0.00	0.00	0.00	0.00	0.00	-12.75
IGSTPS	0.00	0.00	0.00	0.00	0.00	0.00	4.06	0.00	-4.06
KARCHAM WANGTOO	16.72	0.00	0.00	0.00	0.00	0.00	0.29	0.00	-17.01
SHREE CEMENT	28.26	0.00	0.00	0.00	0.00	0.00	2.30	0.00	-30.56
LANCO BUDHIL	0.52	0.00	0.00	0.00	0.00	0.00	0.02	0.00	-0.54
SORANG HEP	6.26	0.00	0.64	0.00	0.00	0.00	0.02	0.00	-6.92
SAINJ HEP	5.49	0.00	0.00	0.00	0.00	0.00	0.00	0.00	-5.49
ASEJTL_SLR	12.89	0.00	3.06	0.00	0.00	0.00	7.15	0.00	-23.11
SINGOLI BHATWARI HE	3.30	0.00	1.60	0.00	0.00	0.00	0.15	0.00	-5.05
NCR ALLAHABAD	0.00	16.92	0.00	5.83	0.00	0.00	0.00	2.30	25.05
RENEW_SR_SLR	25.37	0.00	3.01	0.00	0.00	0.00	6.37	0.00	-34.75
AMP_GREEN6	6.52	0.00	0.00	0.00	0.00	0.00	8.32	0.00	-14.84
ALTRA XERGI	0.00	0.00	39.35	0.00	0.00	0.00	3.69	0.00	-43.04
ONEVOLT	0.00	0.00	0.00	0.00	0.00	0.00	9.49	0.00	-9.49
GRIAN	0.00	0.00	0.00	0.00	0.00	0.00	9.23	0.00	-9.23
AMPLUS_AGES	0.00	0.00	0.00	0.00	0.00	0.00	7.99	0.00	-7.99
RENEW_SPRATAP	5.86	0.00	1.14	0.00	0.00	0.00	2.70	0.00	-9.69
RENEW_SVIHAAN	1.93	0.00	0.42	0.00	0.00	0.00	1.18	0.00	-3.52
NTPC STATIONS-WR	0.72	0.00	0.00	0.00	0.00	0.00	62.30	1.43	-61.60
JINDAL POWER	189.06	0.00	0.00	0.00	0.00	0.00	6.07	2.23	-192.90
ACBIL	73.34	0.00	0.00	0.00	0.00	0.00	10.84	0.23	-83.96
BALCO	16.60	1.05	0.00	8.87	0.00	0.00	27.60	0.00	-34.27

DCPP	90.63	0.00	0.00	0.00	0.00	0.00	4.75	0.00	-95.38
EMCO	51.54	0.00	0.00	0.00	0.00	0.00	10.74	0.23	-62.04
ESSAR POWER	388.43	0.00	0.00	0.00	0.00	0.00	6.84	7.16	-388.12
JINDAL STAGE-II	427.06	0.00	0.00	0.00	0.00	0.00	9.02	1.03	-435.06
DB POWER	167.10	0.00	0.00	0.00	0.00	0.00	1.69	0.00	-168.79
DHARIWAL POWER	26.59	0.00	0.00	0.00	0.00	0.00	0.84	0.00	-27.43
JAYPEE NIGRIE	201.24	0.00	0.00	0.00	0.00	0.00	1.14	0.00	-202.38
MB POWER	60.18	0.27	0.00	0.00	0.00	0.00	6.17	0.70	-65.37
MARUTI COAL	14.61	0.00	0.00	0.00	0.00	0.00	4.90	0.00	-19.51
JHABUA POWER_MP	8.89	0.00	0.00	0.00	0.00	0.00	15.36	0.21	-24.03
SASAN UMPP	0.00	0.00	0.00	0.00	0.00	0.00	3.04	0.00	-3.04
TRN ENERGY	0.00	0.00	0.00	0.00	0.00	0.00	15.29	0.00	-15.29
RKM POWER	16.92	0.00	0.00	0.00	0.00	0.00	10.74	0.00	-27.66
SKS POWER	31.06	0.00	0.00	0.00	0.00	0.00	8.99	0.00	-40.05
INOX_BHUJ	0.00	0.00	0.85	0.00	0.00	0.00	0.00	0.00	-0.85
AMPS Hazira	0.00	70.84	0.00	62.16	0.00	0.00	0.00	18.32	151.32
RGPP_L IR	0.00	0.00	0.00	0.00	0.00	0.00	1.56	0.71	-0.85
ADANI_WIND	21.79	0.00	23.93	0.00	0.00	0.00	5.09	0.00	-50.82
CONTINNUM PT	0.00	0.00	10.19	0.00	0.00	0.00	0.00	0.00	-10.19
REENERGY5_WIND	1.08	0.00	6.20	0.00	0.00	0.00	0.35	0.00	-7.62
ARTPP	376.02	0.00	0.00	0.00	0.00	0.00	19.25	2.23	-393.04
MTPS	0.00	0.00	0.00	0.00	0.00	0.00	26.21	0.00	-26.21
RAIGARH_ADANI	251.63	0.00	0.00	0.00	0.00	0.00	4.80	0.00	-256.43
NREL_DAYAPAR (W)	0.00	0.00	0.00	0.00	0.00	0.00	3.66	0.00	-3.66
ADANI_4RE	3.31	0.00	10.82	0.00	0.00	0.00	1.47	0.00	-15.60
NTPC STATIONS-SR	12.77	0.00	0.00	0.00	0.00	0.00	26.95	0.00	-39.73
SIMHAPURI	43.95	0.00	0.00	0.00	0.00	0.00	13.44	3.33	-54.06
COASTGEN	122.21	0.00	0.00	0.00	0.00	0.00	0.00	0.00	-122.21
IL&FS	27.79	0.00	0.00	0.00	0.00	0.00	8.91	0.00	-36.70
NLC	0.00	0.00	0.00	0.00	0.00	0.00	7.53	0.00	-7.53
SEBPCORP	98.35	0.00	0.00	0.00	0.00	0.00	49.45	0.00	-147.79
AYANA_NPKUNTA	0.00	0.00	19.56	0.00	0.00	0.00	1.012	0.00	-20.573
OSTRO Hiriyur	5.29	0.00	11.88	0.00	0.00	0.00	0.47	0.00	-17.63
RENEW_ROSHNI	6.36	0.00	9.74	0.00	0.00	0.00	2.83	0.00	-18.93
NTPC STATIONS-ER	34.78	0.00	0.00	0.00	0.00	0.00	52.30	0.00	-87.08
MAITHON POWER LTD	0.00	0.00	0.00	0.00	0.00	0.00	0.40	0.00	-0.40
NPGC	6.90	0.00	0.00	0.00	0.00	0.00	8.96	0.00	-15.86
ADHUNIK POWER LTD	35.04	0.00	0.00	0.00	0.00	0.00	4.17	0.00	-39.20
GMR KAMALANGA	0.01	0.00	0.00	0.00	0.00	0.00	0.01	0.00	-0.02
JITPL	330.19	0.00	0.00	0.00	0.00	0.00	3.88	0.00	-334.07
JORETHANG	0.00	0.00	0.00	0.00	0.00	0.00	0.15	0.00	-0.15
NEPAL(NVVN)	0.00	188.76	0.00	0.00	0.00	0.00	0.15	8.95	197.56
TASHIDENG HEP	0.00	0.00	0.00	0.00	0.00	0.00	0.20	0.00	-0.20
DGPCL Bhutan	0.00	326.98	0.00	0.00	0.00	0.00	0.00	9.81	336.79
KBUNL	0.53	0.00	0.00	0.00	0.00	0.00	0.00	0.00	-0.53
BASOCHHU HEP	0.00	0.74	0.00	0.00	0.00	0.00	14.21	0.27	-13.20
NTPC STATIONS-NER	1.10	0.00	0.00	0.00	0.00	0.00	2.26	0.00	-3.35
NEEPCO STATIONS	0.36	0.00	0.00	0.00	0.00	0.00	11.18	0.00	-11.54
RANGANADI HEP	0.00	0.00	0.00	0.00	0.00	0.00	0.038	0.00	-0.038
DOYANG HEP	0.00	0.00	0.00	0.00	0.00	0.00	0.15	0.00	-0.15
ONGC PALATANA	0.00	0.00	0.00	0.00	0.00	0.00	1.85	0.00	-1.85
PARE HEP	0.00	0.00	0.00	0.00	0.00	0.00	0.04	0.00	-0.04

Source: NLDC

* in case of a state, the entities which are "selling" also include generators connected to state grid and the entities which are "buying" also include open access consumers.

** (-) indicates sale and (+) indicates purchase,

*** Total net includes net of transactions through various segments on power exchanges

Table-29: VOLUME AND CHARGES UNDER DSM (DAY-WISE), JANUARY 2024

Date	Volume (MU)	All India Grid Charges (₹/kWh)		
		Minimum	Maximum	Average
1-Jan-24	75.60	2.34	10.00	5.45
2-Jan-24	72.43	2.49	10.00	5.72
3-Jan-24	68.06	2.34	10.00	6.08
4-Jan-24	71.65	2.10	10.00	6.46
5-Jan-24	69.96	2.00	10.00	6.40
6-Jan-24	75.50	2.01	10.00	5.78
7-Jan-24	79.22	2.05	10.00	5.21
8-Jan-24	75.09	2.45	10.00	6.02
9-Jan-24	77.37	2.00	10.00	5.58
10-Jan-24	75.50	2.50	10.00	5.68
11-Jan-24	77.16	2.18	10.00	5.37
12-Jan-24	71.48	2.50	10.00	5.69
13-Jan-24	71.73	2.80	10.00	6.52
14-Jan-24	72.83	3.00	10.00	4.76
15-Jan-24	69.55	2.71	10.00	5.95
16-Jan-24	63.67	2.92	10.00	6.23
17-Jan-24	71.99	2.93	10.00	7.03
18-Jan-24	72.77	3.00	10.00	6.88
19-Jan-24	69.92	2.85	10.00	7.15
20-Jan-24	70.87	2.89	10.00	6.90
21-Jan-24	72.74	2.80	10.00	6.30
22-Jan-24	72.15	2.85	10.00	7.14
23-Jan-24	69.00	2.53	10.00	7.16
24-Jan-24	71.94	2.95	10.00	7.46
25-Jan-24	73.33	2.59	10.00	7.23
26-Jan-24	72.88	2.99	10.00	6.20
27-Jan-24	77.56	2.75	10.00	6.52
28-Jan-24	71.79	2.60	10.00	5.88
29-Jan-24	69.67	2.75	10.00	6.56
30-Jan-24	71.16	2.86	10.00	6.92
31-Jan-24	73.14	2.97	10.00	6.47
Total	2247.72	2.00[#]	10.00[#]	6.28

Source: NLDC

[#] Maximum/Minimum in the month

Table-30: VOLUME OF ELECTRICITY UNDER DRAWAL/ OVER INJECTION (EXPORTED) UNDER DSM, JANUARY 2024

Name of the Entity	Volume of Under drawal/ Over injection (MUs)	% of Volume
MP	96.57	4.47
UTTAR PRADESH	95.52	4.42
MAHARASHTRA	94.09	4.35
PUNJAB	93.02	4.30
GUJARAT	91.80	4.25
NTPC STATIONS-WR	91.71	4.24
KARNATAKA	81.97	3.79
RAJASTHAN	79.60	3.68
NTPC STATIONS-NR	72.58	3.36
NTPC STATIONS-ER	63.89	2.95
ANDHRA PRADESH	61.86	2.86
HARYANA	57.28	2.65
TELANGANA	56.83	2.63
TAMIL NADU	53.89	2.49
CHHATTISGARH	51.01	2.36
DELHI	46.14	2.13
BIHAR	43.46	2.01
NTPC STATIONS-SR	40.34	1.87
JHARKHAND	39.17	1.81
SASAN UMPP	38.19	1.77
NEPAL(NVVN)	32.01	1.48
JINDAL STAGE-II	28.93	1.34
DVC	27.62	1.28
NEEPCO STATIONS	26.13	1.21
NHPC STATIONS	22.31	1.03
AMPS Hazira	21.49	0.99
JAYPEE NIGRIE	20.87	0.97
J & K	19.24	0.89
NLC	17.89	0.83
UTTARAKHAND	13.28	0.61
BBMB	12.48	0.58
IGSTPS	11.13	0.51
ESSAR POWER	10.33	0.48
JINDAL POWER	9.97	0.46
BALCO	9.74	0.45
TRIPURA	9.55	0.44
PONDICHERRY	9.32	0.43
LANKO_AMK	9.13	0.42
NPGC	8.58	0.40
HIMACHAL PRADESH	8.45	0.39
ODISHA	8.23	0.38
RPREL	7.82	0.36
RENEW_SPRATAP	7.33	0.34
MEGHALAYA	7.15	0.33
ASEJTL_SLR	6.73	0.31
GOA	6.69	0.31
RKM POWER	6.50	0.30
MAITHON POWER LTD	6.50	0.30
GIWEL_BHUI	6.45	0.30
KREDL_PVGD	6.32	0.29
ADANI_WIND	6.27	0.29
NOKHRA_STPP	6.27	0.29
RAIL	6.17	0.29
NJPC	6.01	0.28
AGEMPL BHUI	6.01	0.28
KERALA	5.81	0.27
BRBCL,NABINAGAR	5.64	0.26
AZURE43_SLR	5.57	0.26

RENEW_ROSHNI	5.57	0.26
AYANA_RPI	5.48	0.25
RENEW_BHUI	5.31	0.25
AZURE41_SLR	5.29	0.24
DD&DNH	5.26	0.24
SBESS	5.24	0.24
WEST BENGAL	5.23	0.24
RENEWURJA_SLR	5.07	0.23
MB POWER	5.05	0.23
OSTRO	5.00	0.23
TATA_PVGD	5.00	0.23
ACME_HEERGARH	4.91	0.23
ACME_SLR	4.85	0.22
AVAADASN_SLR	4.85	0.22
ARS_PVGD	4.81	0.22
SPRNG_NPKUNTA	4.40	0.20
ASSAM	4.38	0.20
MIZORAM	4.35	0.20
CHANDIGARH	4.25	0.20
SEMBCORP	4.22	0.20
AYANA_NPKUNTA	4.21	0.19
PARAM_PVGD	4.14	0.19
AZURE_PVGD	4.00	0.19
GIWEL_TCN	3.91	0.18
EDEN_SLR	3.83	0.18
SBG_NPK	3.80	0.18
ACME_RUMS	3.76	0.17
NSPCL	3.75	0.17
GRT_JPL	3.75	0.17
JITPL	3.70	0.17
AVADARJHN_SLR	3.64	0.17
RENEW_BHACHAU	3.64	0.17
RENEWSB	3.63	0.17
NAPP	3.59	0.17
RENEW_SR_SLR	3.56	0.16
MSUPL_BHDL2	3.55	0.16
SKRPL	3.55	0.16
SIMHAPURI	3.54	0.16
ARINSUM_RUMS	3.51	0.16
AHEJ2L_SOLAR	3.37	0.16
ABC_BHDL2	3.36	0.16
RENEWJH_SLR	3.34	0.15
MAHINDRA_RUMS	3.30	0.15
RENEWSW_SLR	3.17	0.15
ALFANAR_BHUI	3.12	0.14
BANGLADESH	3.09	0.14
TEHRI	3.06	0.14
FORTUM1_PVGD	3.02	0.14
CLEAN_SLR	3.01	0.14
DB POWER	3.01	0.14
RISING_SLR	3.00	0.14
DEVKOOT_SLR	2.98	0.14
CLEANSR_SLR	2.96	0.14
RENEW_SVIHAAN	2.95	0.14
RAMPUR HEP	2.95	0.14
KOTESHWAR	2.89	0.13
ORANGE_TCN	2.82	0.13
ALTRA XERGI	2.82	0.13
NTPC_ANTP	2.80	0.13
RENEW_SLR_BKN	2.72	0.13
THARI_SLR	2.70	0.13
SKS POWER	2.68	0.12
EMCO	2.67	0.12

GRIAN	2.63	0.12
APRAAVA	2.63	0.12
NTPC STATIONS-NER	2.63	0.12
TATA_SLR	2.59	0.12
ADY1_PVGD	2.58	0.12
NTPL	2.56	0.12
OSTRO Hiriyur	2.53	0.12
CGPL	2.50	0.12
AZURE_MAPLE_SLR	2.46	0.11
MSEPL	2.41	0.11
KARCHAM WANGTOO	2.36	0.11
RAP C	2.35	0.11
TORRENT SOLARGEN	2.33	0.11
ARERJL_SLR	2.30	0.11
AHEJOL_S_FTG2	2.22	0.10
GMR KAMALANGA	2.10	0.10
MANIPUR	2.04	0.09
AMPLUS_AGES	2.02	0.09
RENEW_PVGD	2.02	0.09
TATA_GREEN	2.01	0.09
NETRA WIND	1.97	0.09
SIKKIM	1.94	0.09
NAGALAND	1.87	0.09
AHEJ4L_SOLAR	1.87	0.09
ONGC PALATANA	1.84	0.08
MSRPL	1.83	0.08
FRV_ANTP	1.76	0.08
NETCL VALLUR	1.75	0.08
IL&FS	1.74	0.08
RGPPL	1.74	0.08
JSW_RENEW_2	1.73	0.08
JHABUA POWER_MP	1.72	0.08
AZURE_SLR	1.65	0.08
AVIKIRAN	1.65	0.08
BARC	1.64	0.08
THERMAL POWERTECH	1.60	0.07
MTPS II	1.59	0.07
AVAADA1_PVGD	1.54	0.07
KSK MAHANADI	1.45	0.07
ONEVOLT	1.45	0.07
DGPCL Bhutan	1.43	0.07
NEP	1.43	0.07
AZURE_ANTP	1.43	0.07
RAP B	1.36	0.06
MRPL	1.36	0.06
ARUNACHAL PRADESH	1.36	0.06
ACBIL	1.31	0.06
AZURE34_SLR	1.31	0.06
AMP_GREEN6	1.30	0.06
POWERGRID HVDC	1.23	0.06
TATA_ANTP	1.22	0.06
GSECL_Radhanesda	1.16	0.05
SESPL	1.16	0.05
COASTGEN	1.12	0.05
Railways_ER ISTS	1.10	0.05
SBG_PVGD	1.07	0.05
FORTUM2_PVGD	1.05	0.05
DCPP	1.02	0.05
TPSL	1.01	0.05
TRN ENERGY	0.96	0.04
ESPL_RADHANESDA	0.93	0.04
SPRING_PUGALUR	0.92	0.04
BETAM_TCN	0.90	0.04

AHSP_ANTP	0.84	0.04
POWERICA	0.80	0.04
AKSP_ANTP	0.79	0.04
AVAADA2_PVGD	0.79	0.04
RENEW_SLR	0.72	0.03
ADHUNIK POWER LTD	0.69	0.03
ADANI GREEN	0.68	0.03
INOX_BHUI	0.67	0.03
ABSP_ANTP	0.62	0.03
RANGIT HEP	0.61	0.03
AKS_PVGD	0.59	0.03
LOKTAK	0.57	0.03
YARROW_PVGD	0.57	0.03
GIPCL_RADHANESDA	0.56	0.03
RANGANADI HEP	0.56	0.03
ADANI_SLR 4	0.53	0.02
TPREL_RADHANESDA	0.51	0.02
GSECL P-II	0.51	0.02
DAGACHU	0.46	0.02
DHARIWAL POWER	0.42	0.02
ADANIHB_SLR	0.41	0.02
RSTPS_FSPP	0.41	0.02
SAINJ HEP	0.40	0.02
FRV_NPK	0.38	0.02
PARE HEP	0.38	0.02
SHREE CEMENT	0.35	0.02
SINGOLI BHATWARI HEP	0.30	0.01
DOYANG HEP	0.27	0.01
TASHIDENG HEP	0.27	0.01
SRSSFPL	0.26	0.01
JORETHANG	0.26	0.01
CHUZACHEN HEP	0.25	0.01
SORANG HEP	0.19	0.01
RONGNICHU HEP	0.16	0.01
AD HYDRO	0.14	0.01
LANCO BUDHIL	0.14	0.01
NFF	0.14	0.01
HVDC ALPD	0.04	0.002
MYTRAH_TCN	0.03	0.001
HVDC PUS	0.01	0.001
Total	2162.19	100.00
Volume Exported by top 5 Regional Entities	471.01	21.78

Table-31: VOLUME OF ELECTRICITY OVER DRAWAL/ UNDER INJECTION (IMPORTED) UNDER DSM, JANUARY 2024		
Name of the Entity	Volume of Over drawal/ Under Injection (MUs)	% of Volume
NTPC STATIONS-NR	101.01	4.33
NTPC STATIONS-WR	87.74	3.76
ADANIHB_SLR	79.99	3.43
NTPC STATIONS-ER	78.24	3.35
MAHARASHTRA	75.74	3.25
NTPC STATIONS-SR	72.95	3.13
RAJASTHAN	69.14	2.96
ODISHA	64.75	2.78
WEST BENGAL	62.74	2.69
KARNATAKA	61.10	2.62
MP	59.02	2.53
UTTAR PRADESH	58.38	2.50
BIHAR	55.77	2.39
GUJARAT	53.88	2.31
TAMIL NADU	51.63	2.21
HIMACHAL PRADESH	43.91	1.88
J & K	40.99	1.76
ANDHRA PRADESH	38.74	1.66
TELANGANA	38.63	1.66
PUNJAB	36.21	1.55
NLC	33.36	1.43
UTTARAKHAND	33.26	1.43
HARYANA	32.58	1.40
AGEMPL BHUJ	28.35	1.21
KERALA	27.35	1.17
ASSAM	26.87	1.15
GIWEL_BHUJ	26.36	1.13
AYANA_NPKUNTA	21.91	0.94
AMPS Hazira	20.82	0.89
INOX_BHUJ	20.13	0.86
SBESS	18.66	0.80
PARAM_PVGD	18.51	0.79
SPRING_PUGALUR	18.49	0.79
DVC	18.20	0.78
OSTRO	17.93	0.77
JHARKHAND	17.83	0.76
RENEW_BHUJ	17.70	0.76
CHHATTISGARH	16.43	0.70
CHANDIGARH	16.39	0.70
IGSTPS	16.17	0.69
AVAADASN_SLR	14.93	0.64
RENEW_BHACHAU	14.54	0.62
SKRPL	14.46	0.62
ALFANAR_BHUJ	14.26	0.61
RENEW_ROSHNI	13.70	0.59
CGPL	12.47	0.53
AVADARJHN_SLR	12.14	0.52
ADANI_WIND	11.98	0.51
ARUNACHAL PRADESH	11.47	0.49
KAPP 3&4	11.29	0.48
KAPS 3&4 (INFIRM)	11.29	0.48
GRT_JPL	10.65	0.46
KREDL_PVGD	10.55	0.45
DELHI	10.34	0.44
FORTUM1_PVGD	10.17	0.44
OSTRO Hiriyur	9.11	0.39
GOA	8.97	0.38
DGPCL Bhutan	8.92	0.38
RAIL	8.82	0.38

CLEAN_SLR	8.50	0.36
AZURE43_SLR	8.49	0.36
SHREE CEMENT	8.41	0.36
MB POWER	8.29	0.36
SESPL	7.67	0.33
NPGC	7.57	0.32
MANIPUR	7.13	0.31
ESSAR POWER	6.90	0.30
AVIKIRAN	6.86	0.29
NEP	6.84	0.29
BRBCL,NABINAGAR	6.74	0.29
NETCL VALLUR	6.63	0.28
ASEJTL_SLR	6.12	0.26
NETRA WIND	5.95	0.25
NOKHRA_STPP	5.79	0.25
RAP B	5.74	0.25
APRAAVA	5.49	0.24
RAP C	5.46	0.23
AYANA_RP1	5.41	0.23
RENEW_SR_SLR	5.36	0.23
ABC_BHDL2	5.20	0.22
NTPC STATIONS-NER	5.19	0.22
DD&DNH	5.16	0.22
AHEJ2L_SOLAR	5.08	0.22
JINDAL STAGE-II	5.02	0.22
CLEANSPL_SLR	5.02	0.21
TATA_SLR	5.00	0.21
TORRENT SOLARGEN	4.99	0.21
ACME HEERGARH	4.93	0.21
AZURE41_SLR	4.84	0.21
BANGLADESH	4.78	0.20
MAHINDRA_RUMS	4.76	0.20
BALCO	4.57	0.20
NEEPCO STATIONS	4.17	0.18
NTPC_ANTP	4.12	0.18
ARERJL_SLR	4.11	0.18
THARI_SLR	4.11	0.18
TEHRI	4.05	0.17
ARINSUM_RUMS	3.96	0.17
JINDAL POWER	3.95	0.17
ACME_RUMS	3.94	0.17
DEVKOOT_SLR	3.90	0.17
MSUPL_BHDL2	3.90	0.17
SIKKIM	3.75	0.16
TATA_PVGD	3.67	0.16
RPREL	3.50	0.15
THERMAL POWERTECH	3.49	0.15
RENEW_SLR_BKN	3.48	0.15
JITPL	3.41	0.15
AHEJOL_S_FTG2	3.39	0.15
ACME_SLR	3.34	0.14
ARS_PVGD	3.32	0.14
JSW_RENEW_2	3.26	0.14
SIMHAPURI	3.25	0.14
JHABUA POWER_MP	3.23	0.14
TATA_GREEN	3.19	0.14
SEMBCORP	3.18	0.14
AZURE_SLR	3.16	0.14
AHEJ4L_SOLAR	3.15	0.14
NHPC STATIONS	3.15	0.14
MSEPL	3.10	0.13
RISING_SLR	3.02	0.13
EDEN_SLR	2.90	0.12

AZURE_PVGD	2.87	0.12
SPRNG_NPKUNTA	2.81	0.12
SBG_NPK	2.79	0.12
DB POWER	2.76	0.12
RENEWSW_SLR	2.66	0.11
FRV_ANTP	2.66	0.11
ALTRA XERGI	2.65	0.11
ORANGE_TCN	2.58	0.11
RENEWJH_SLR	2.57	0.11
RENEWSB	2.57	0.11
NAPP	2.56	0.11
MSRPL	2.49	0.11
MYTRAH_TCN	2.47	0.11
SASAN UMPP	2.45	0.11
ADHUNIK POWER LTD	2.39	0.10
AZURE_MAPLE_SLR	2.38	0.10
AMP_GREEN6	2.36	0.10
COASTGEN	2.31	0.10
POWERICA	2.28	0.10
ADY1_PVGD	2.28	0.10
GIWEL_TCN	2.27	0.10
MTPS II	2.19	0.09
KSK MAHANADI	2.00	0.09
NSPCL	1.98	0.08
RENEW_PVGD	1.93	0.08
RENEWURJA_SLR	1.91	0.08
AVAADA1_PVGD	1.84	0.08
MRPL	1.71	0.07
GMR KAMALANGA	1.71	0.07
RGPPL	1.71	0.07
RENEW_SPRATAP	1.67	0.07
EMCO	1.64	0.07
AZURE34_SLR	1.64	0.07
ACBIL	1.64	0.07
ONEVOLT	1.62	0.07
TPSL	1.59	0.07
NTPL	1.56	0.07
RANGANADI HEP	1.54	0.07
DHARIWAL POWER	1.48	0.06
GRIAN	1.45	0.06
RAPP 7&8	1.42	0.06
BBMB	1.38	0.06
RENEW_SLR	1.27	0.05
NAGALAND	1.27	0.05
KOTESHWAR	1.26	0.05
MEGHALAYA	1.25	0.05
FORTUM2_PVGD	1.25	0.05
TRIPURA	1.24	0.05
RENEW_SVIHAAN	1.23	0.05
PONDICHERRY	1.22	0.05
ADANI GREEN	1.18	0.05
AMPLUS_AGES	1.18	0.05
ESPL_RADHANESDA	1.17	0.05
Railways_ER ISTS	1.11	0.05
AZURE_ANTP	1.10	0.05
MAITHON POWER LTD	1.09	0.05
NEPAL(NVVN)	1.06	0.05
KARCHAM WANGTOO	1.05	0.05
DGEN MEGA POWER	1.05	0.04
TRN ENERGY	1.04	0.04
SBG_PVGD	1.01	0.04
TATA_ANTP	1.01	0.04
RKM POWER	0.96	0.04

ADANI_SLR 4	0.89	0.04
GSECL P-II	0.89	0.04
BETAM_TCN	0.82	0.04
RSTPS_FSPP	0.79	0.03
SRSSFPL	0.78	0.03
FRV_NPK	0.77	0.03
MIZORAM	0.71	0.03
AVAADA2_PVGD	0.70	0.03
AKSP_ANTP	0.69	0.03
AHSP_ANTP	0.65	0.03
YARROW_PVGD	0.65	0.03
AKS_PVGD	0.64	0.03
SKS POWER	0.64	0.03
ABSP_ANTP	0.64	0.03
TPREL_RADHANESDA	0.60	0.03
GIPCL_RADHANESDA	0.58	0.03
LANKO_AMK	0.53	0.02
MEENAKSHI	0.45	0.02
KHURJA STPP	0.45	0.02
LANKO KONDAPALLI	0.41	0.02
JAYPEE NIGRIE	0.41	0.02
NJPC	0.37	0.02
GSECL_Radhanesda	0.29	0.01
IL&FS	0.27	0.01
DOYANG HEP	0.25	0.01
CHUZACHEN HEP	0.19	0.01
SINGOLI BHATWARI HEP	0.16	0.01
PARE HEP	0.13	0.01
RAMPUR HEP	0.12	0.01
NFF	0.11	0.005
DCPP	0.11	0.005
RONGNICHU HEP	0.11	0.005
ONGC PALATANA	0.11	0.005
LOKTAK	0.09	0.004
TASHIDENG HEP	0.09	0.004
HVDC PUS	0.09	0.004
JORETHANG	0.08	0.003
RANGIT HEP	0.07	0.003
SAINJ HEP	0.06	0.002
HVDC ALPD	0.04	0.002
AD HYDRO	0.04	0.002
LANCO BUDHIL	0.04	0.002
SORANG HEP	0.03	0.001
DAGACHU	0.03	0.001
BARC	0.01	0.001
TOTAL	2333.24	100.00
Volume Imported by top 5 Regional Entities	422.72	18.12

Table-32: VOLUME AND PRICE OF RENEWABLE ENERGY CERTIFICATES (RECs) TRANSACTED THROUGH POWER EXCHANGES AND THROUGH TRADERS (BILATERAL), JANUARY 2024

Sr. No	Details of REC Transactions	Through Power Exchange			Bilateral through Traders
		IEX	PXIL	HPX	
1	Volume of Buy Bid	1575076	1159486	15000	-
2	Volume of Sell Bid	13311326	7081829	326473	-
3	Ratio of Buy Bid to Sell Bid Volume	0.12	0.16	0.05	-
4	Traded Volume (MWh)	1520076	1114486	14742	20500
5	Weighted Average Price (₹/MWh)	360.00	360.00	350.00	624.21

Source: Power Exchanges & Grid-India REC Report

Note: 1 REC = 1 MWh

Under the CERC REC Regulations 2022, the categorization of RECs has been dispensed with and exchange of RECs through trading licensees has also been allowed

Table-33(a): VOLUME AND PRICE OF CROSS BORDER TRADE THROUGH DAY AHEAD MARKET AT IEX, JANUARY 2024

Sr. No.	Neighbouring Country	Volume (MU)			Weighted Average Price (₹/kWh)	
		Sale	Purchase	Net*	Sale	Purchase
1	Nepal	0.00	218.90	218.90	-	4.92
2	Bhutan	0.00	326.98	326.98	-	4.00
	Total	0.00	545.88	545.88	-	-

Source: IEX

* Net indicates difference of volume purchased and sold by the respective neighbouring country

Note: No Cross Border transactions were recorded in DAM at PXIL and HPX

Table-33(b): VOLUME AND PRICE OF CROSS BORDER TRADE THROUGH REAL TIME MARKET AT IEX, JANUARY 2024

Sr. No.	Neighbouring Country	Volume (MU)			Weighted Average Price (₹/kWh)	
		Sale	Purchase	Net*	Sale	Purchase
1	Nepal	0.15	9.58	9.43	3.02	7.68
2	Bhutan	0.00	9.81	9.81	-	5.08
	Total	0.15	19.40	19.25	-	-

Source: IEX

* Net indicates difference of volume purchased and sold by the respective neighbouring country

Note: No Cross Border transactions were recorded in RTM at PXIL and HPX



Economics Division
Central Electricity Regulatory Commission
36, Janpath, Chanderlok Building